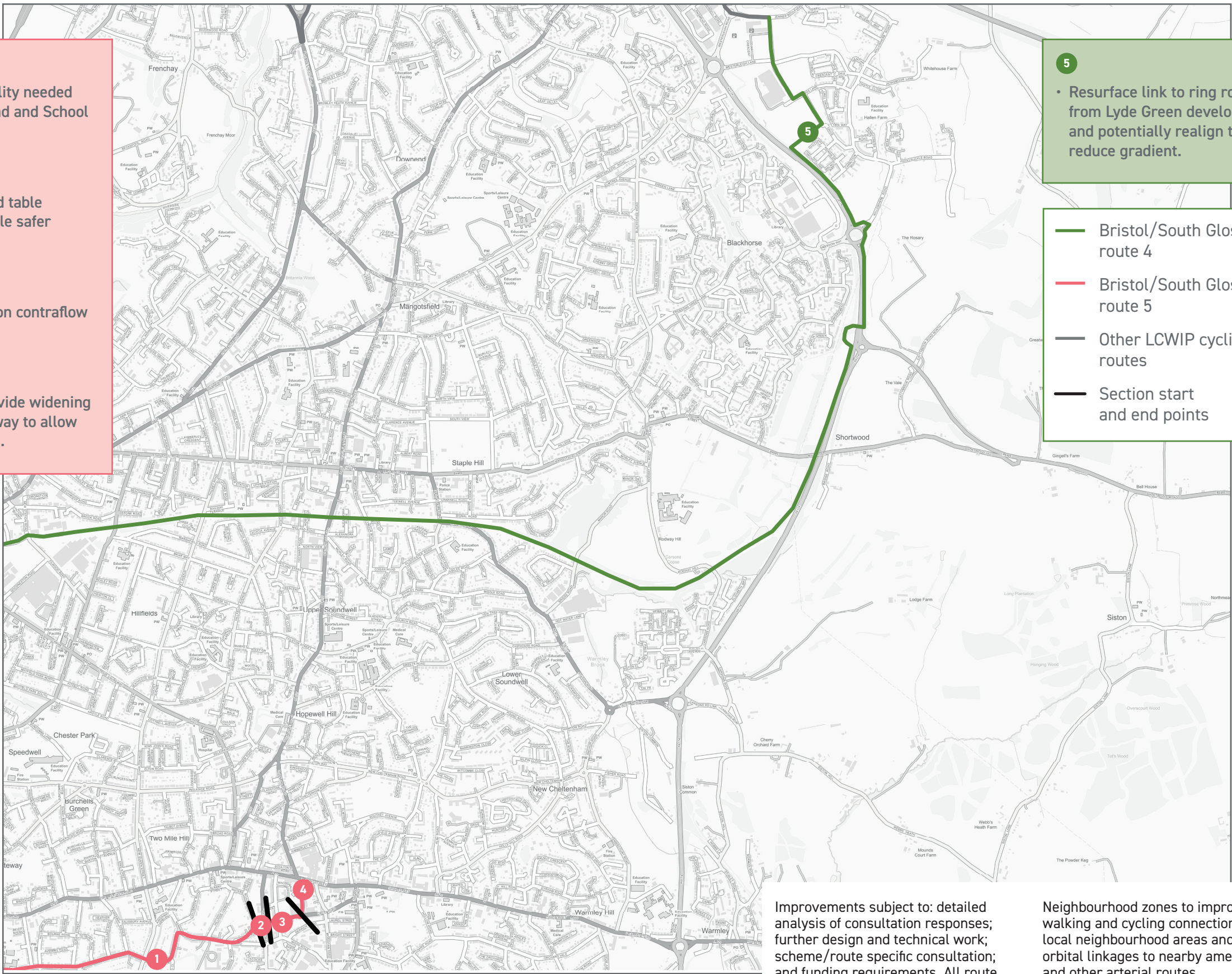


Bristol/South Glos routes 4 and 5

- 1 • Improved legibility needed on Britannia road and School road.
- 2 • Construct raised table junction to enable safer crossing.
- 3 • Add protection on contraflow cycle lane
- 4 • Ambition to provide widening of existing footway to allow shared use path.



- 5 • Resurface link to ring road from Lyde Green development and potentially realign to reduce gradient.

Bristol/South Glos route 4

Bristol/South Glos route 5

Other LCWIP cycling routes

Section start and end points

Improvements subject to: detailed analysis of consultation responses; further design and technical work; scheme/route specific consultation; and funding requirements. All route and zone development will include engagement with local communities to develop adjacent Low Traffic

Neighbourhood zones to improve walking and cycling connections within local neighbourhood areas and improve orbital linkages to nearby amenities and other arterial routes.
Interventions including: introducing, realigning or upgrading dropped kerbs and/or tactile paving; and cutting back

vegetation to improve visibility, lighting or increase footway or cycle route width will be considered as standard in the design of all schemes.
All schemes will be designed in line with the DfT's Local transport note 1/20.