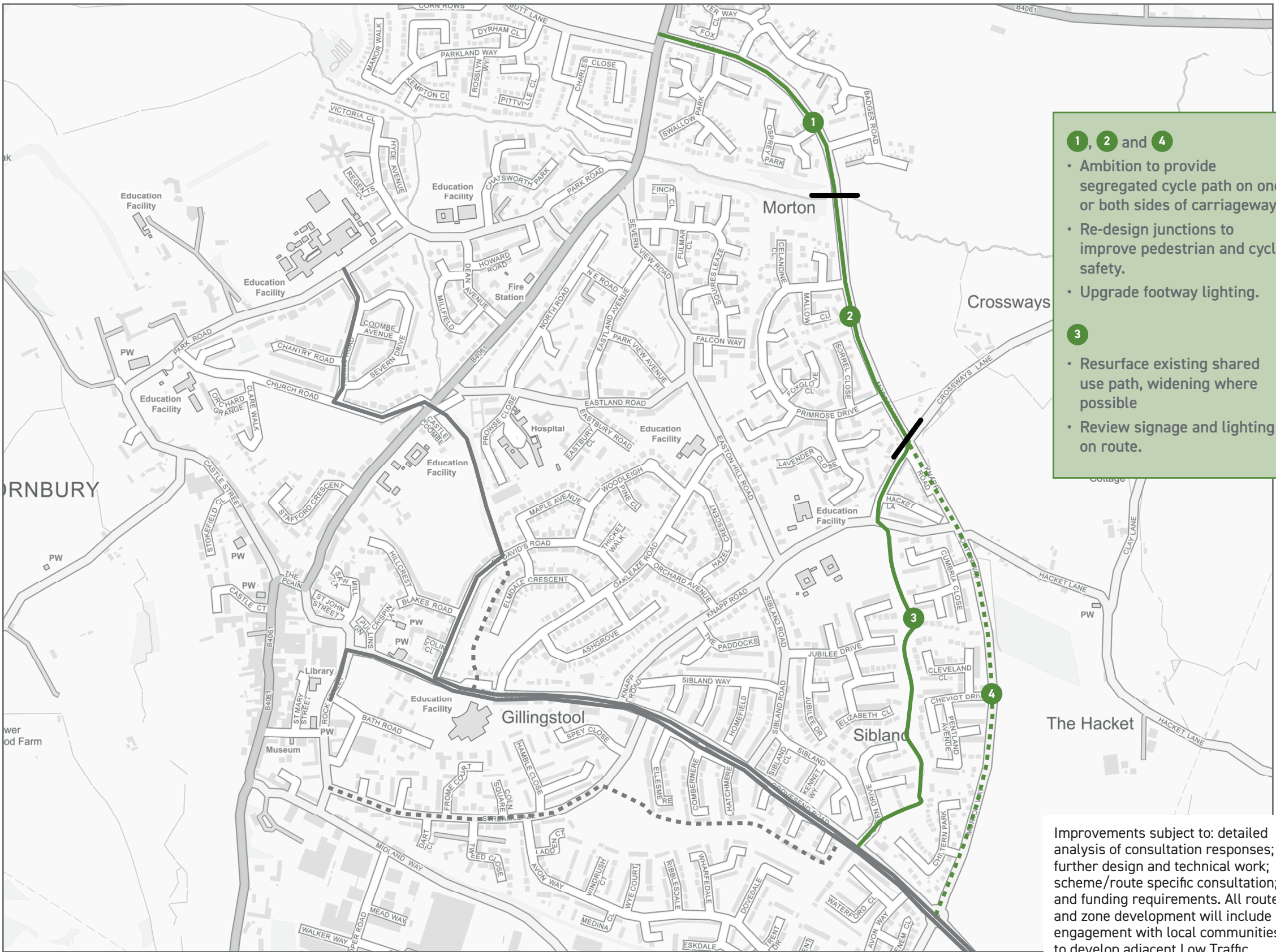


# Thornbury route 2



- 1, 2 and 4**
- Ambition to provide segregated cycle path on one or both sides of carriageway.
  - Re-design junctions to improve pedestrian and cycle safety.
  - Upgrade footway lighting.
- 3**
- Resurface existing shared use path, widening where possible
  - Review signage and lighting on route.

- Thornbury route 2
- - - Thornbury route 2 variant
- Other LCWIP cycling routes
- Section start and end points

Improvements subject to: detailed analysis of consultation responses; further design and technical work; scheme/route specific consultation; and funding requirements. All route and zone development will include engagement with local communities to develop adjacent Low Traffic Neighbourhood zones to improve walking and cycling connections within local neighbourhood areas and improve orbital linkages to nearby amenities and other arterial routes.

Interventions including: introducing, realigning or upgrading dropped kerbs and/or tactile paving; and cutting back vegetation to improve visibility, lighting or increase footway or cycle route width will be considered as standard in the design of all schemes.

All schemes will be designed in line with the DfT's Local transport note 1/20.