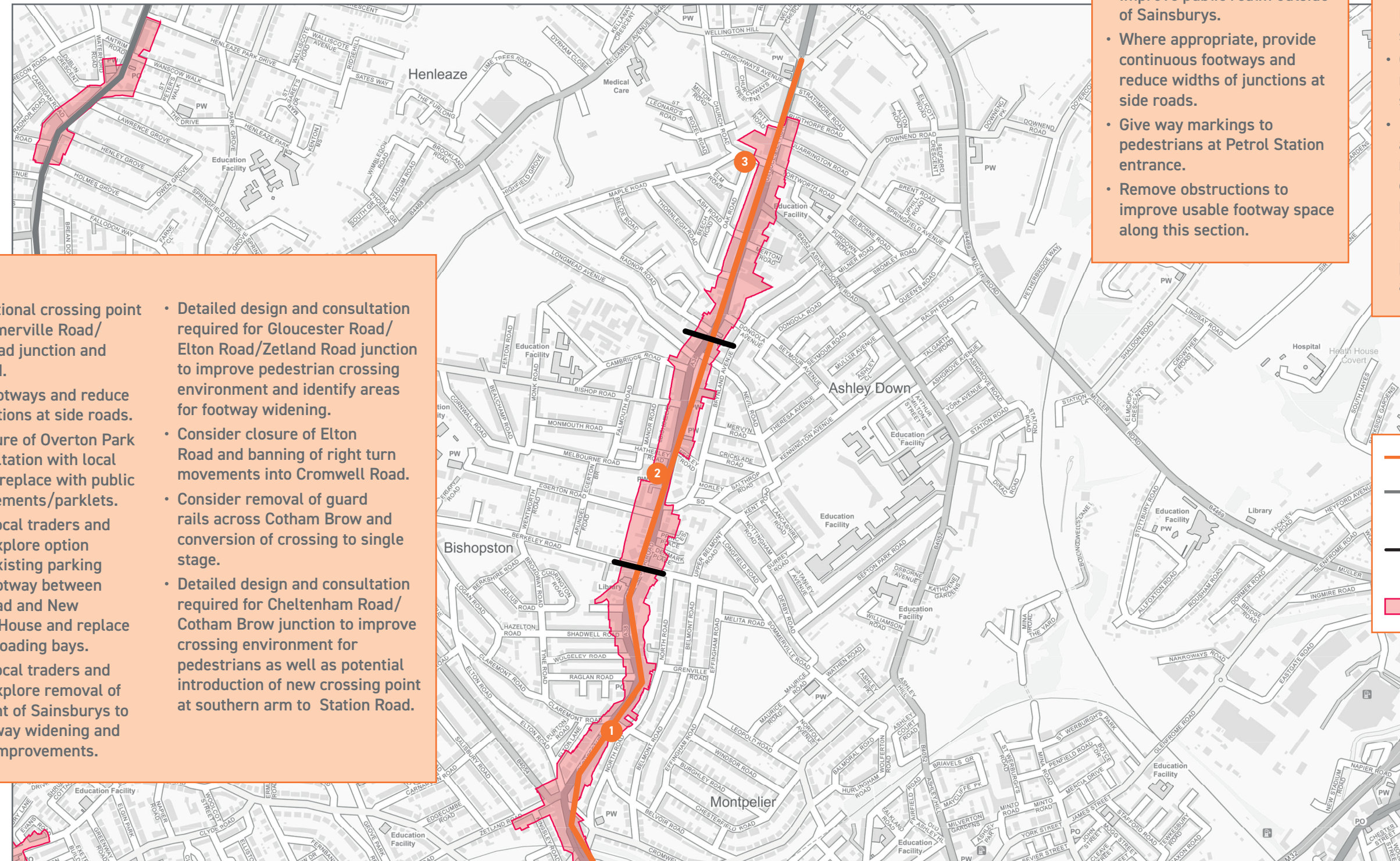


Gloucester Road



1

- Consider additional crossing point between Sommerville Road/ Gloucester Road junction and Wolseley Road.
- Continuous footways and reduce widths of junctions at side roads.
- Consider closure of Overton Park Road in consultation with local residents and replace with public realm improvements/parklets.
- Engage with local traders and residents to explore option of removing existing parking on western footway between Claremont Road and New Sandringham House and replace with off-peak loading bays.
- Engage with local traders and residents to explore removal of parking in front of Sainsburys to allow for footway widening and public realm improvements.
- Detailed design and consultation required for Gloucester Road/ Elton Road/Zetland Road junction to improve pedestrian crossing environment and identify areas for footway widening.
- Consider closure of Elton Road and banning of right turn movements into Cromwell Road.
- Consider removal of guard rails across Cotham Brow and conversion of crossing to single stage.
- Detailed design and consultation required for Cheltenham Road/ Cotham Brow junction to improve crossing environment for pedestrians as well as potential introduction of new crossing point at southern arm to Station Road.

2

- Improve public realm outside of Sainsburys.
- Where appropriate, provide continuous footways and reduce widths of junctions at side roads.
- Give way markings to pedestrians at Petrol Station entrance.
- Remove obstructions to improve usable footway space along this section.

3

- Remove obstructions to improve usable footway space along this section.
- Continuous footways and reduce widths of junctions on side roads.
- In consultation with traders and residents, explore replacing existing parking opposite Dongola avenue with parallel parking to provide more space for public realm improvements such as tree planting, benches, 'parklets' and additional cycle parking.

- Key Walking Route
- Other Key Walking Routes
- Section start and end points
- Core Walking Zones

Improvements subject to: detailed analysis of consultation responses; further design and technical work; scheme/route specific consultation; and funding requirements. All route and zone development will include engagement with local communities to develop adjacent Low Traffic

Neighbourhood zones to improve walking and cycling connections within local neighbourhood areas and improve orbital linkages to nearby amenities and other arterial routes.

Interventions including: introducing, realigning or upgrading dropped kerbs and/or tactile paving; and cutting back

vegetation to improve visibility, lighting or increase footway or cycle route width will be considered as standard in the design of all schemes.

All schemes will be designed in line with the DfT's Local transport note 1/20.