

# West of England Cycle Transformation

## Cycle City Ambition Grant Bid

**West of England**  
Local Enterprise Partnership



**travel** 

Bath & North East Somerset, Bristol, North Somerset and South Gloucestershire Councils  
working together to improve your local transport

## Investing in success.....

Proportion of residents who cycle at least once per month: England, 2011/12 (DfT)

<b>West of England</b>	<b>19%</b>
Newcastle upon Tyne	16%
Manchester	15%
Leeds	13%
Sheffield	13%
Liverpool	12%
Nottingham	12%
Birmingham	12%

Mode of travel to work (ONS) – 2001 to 2011 change in the West of England  
16,099 to 26,796 – An increase of **66.4%** in absolute numbers

Mode of travel to work (ONS) – 2001 to 2011 change in Bristol  
8,108 to 16,211 – An increase of **99.9%** in absolute numbers.

More people in Bristol commute to work by bicycle or on foot than in any other Local Authority in England and Wales (ONS, 2013).

## There's still plenty to do.....

£18m - the cost of inactivity per year to Health Authorities in the West of England, (Sport England, 2013).

West of England Local Enterprise Partnership has an ambition to create **95,000** new jobs by 2030.

Congestion which is estimated to cost our economy £350m a year forecast to rise to **£600m** by 2016 if nothing is done.



# West of England Cycle Transformation

## Working in Partnership

Within the West of England we believe we deliver great added value by working in partnership. Guided by the geography defined by City Deals, our Joint Local Transport Plan and track record of successfully implementing cross boundary projects, we are submitting a joint bid and working together to deliver a 10 Year Transformational Cycle Strategy for our city-region.

## Your Investment Bearing Fruit

Effective delivery is essential in order to turn investment into tangible outcomes. Within the West of England we pride ourselves on our professional approach to scheme delivery using effective programme, project and risk management underpinned by a formally constituted Joint Transport Executive Committee. Using government investment including Cycling City and LSTF, matched with substantial local contribution, we are now seeing significant increases in cycling.

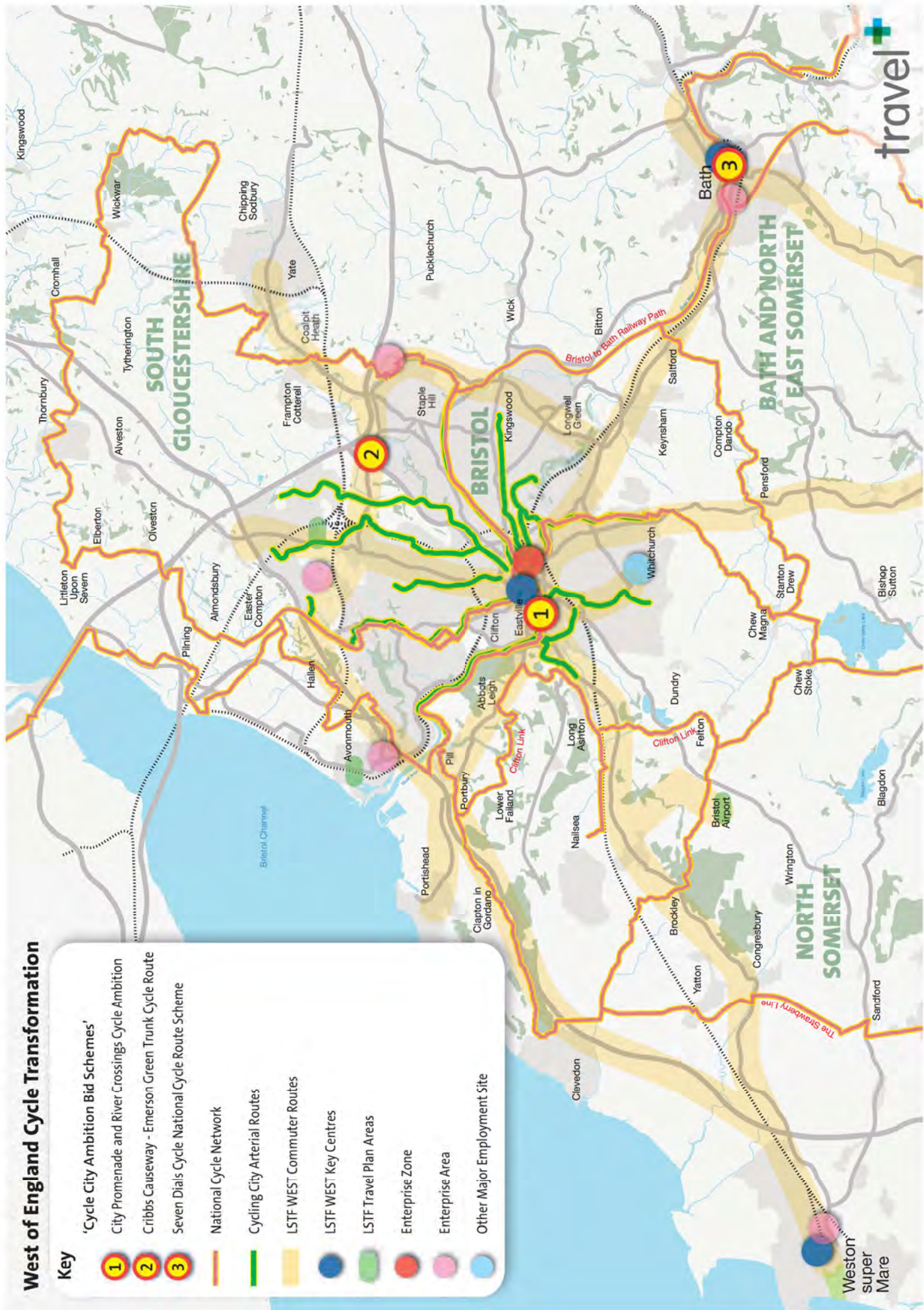
## Building On Success

It is essential that we are not complacent and build on the transformational modal change underway in the West of England by continuing to significantly invest in cycling . The maps and tables on the following pages clearly show our level of ambition with a forecast investment of over £50 million to deliver enhancements to the scope, permeability and safety of our cycle network. Improvements to infrastructure will work hand in hand with Smarter Choices measures backed by strong partner, community and political support. By doing so we will realise significant benefits to the economy, environment and health of individuals throughout the city-region.

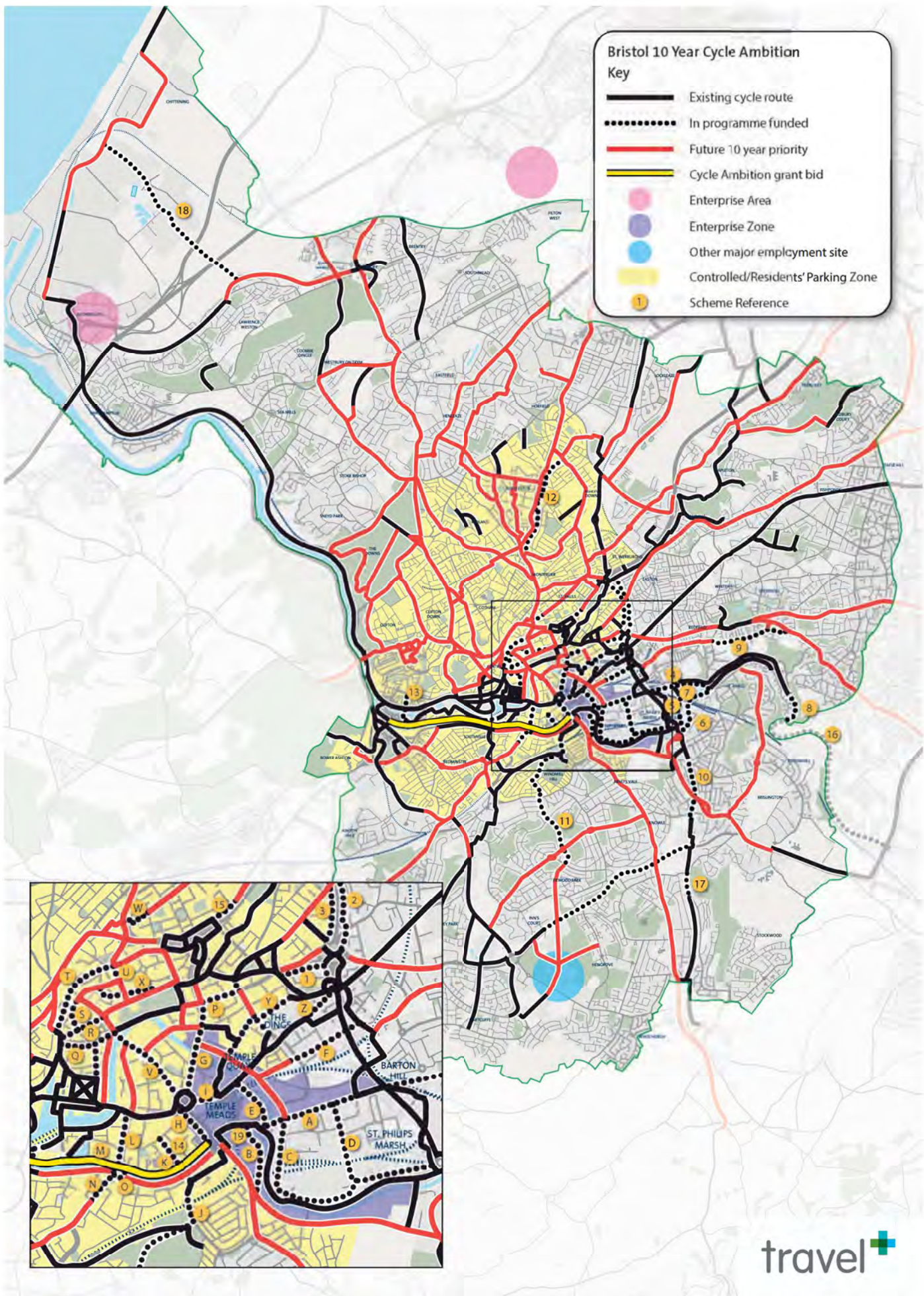
## Our Approach

- “Smarter Choices” promotion and engagement
- Segregated routes for cyclists
- Reallocation of road space
- 8-80 year old cycling culture
- Cycle network consolidation, permeability and expansion
- Delivery through strong partnerships
- Enhanced public realm











## Bristol Ambition Delivery Plan

Map Ref	Improvements	Type	Cost (£m)	Delivery Dates	Funding Source	Status	Objectives (see key below)							
							A	B	C	D	E	F	G	
A	Feeder Rd 3.5m shared	Route Improvement	1.2	2013 - 2014	Enterprise Zone	Being Delivered	✓	✓	✓	✓	✓	✓	✓	✓
B	Arena site 4 to 6m shared	Route Improvement	1.0	2013 - 2015	Enterprise Zone	Being Delivered	✓	✓	✓	✓	✓	✓	✓	✓
C	Albert Rd protected lanes	Route Improvement	0.1	2014 - 2016	Enterprise Zone/ City Deal	Aspirational	✓	✓	✓	✓	✓	✓	✓	✓
D	Albert Cres protected lanes	Route Improvement	0.1	2014 - 2016	Enterprise Zone/ City Deal	Aspirational	✓	✓	✓	✓	✓	✓	✓	✓
E	PO site pontoon/subway 4.0m shared	Route Improvement	0.650	2013 - 2015	Developer	Being Delivered	✓	✓	✓	✓	✓	✓	✓	✓
F	Days Rd 3.0m separate 2-way track	Route Improvement	0.200	2013 - 2014	Enterprise Zone	Being Delivered	✓	✓	✓	✓	✓	✓	✓	✓
G	Temple Way 3.5m separate 2-way track	Route Improvement	0.288	2013 - 2015	Enterprise Zone	Funding Secured	✓	✓	✓	✓	✓	✓	✓	✓
H	Temple Gate 3.5m separate 2-way track	Route Improvement	0.15	2013 - 2015	Enterprise Zone	Funding Secured	✓	✓	✓	✓	✓	✓	✓	✓
I	Friary 3.0m separate 2-way track	Route Improvement	0.1	2014 - 2016	Enterprise Zone	Aspirational	✓	✓	✓	✓	✓	✓	✓	✓
J	St Lukes Rd 3.0m separate 2-way track	Route Improvement	0.557	2013 - 2015	Cycle Ambition Bid	Aspirational	✓	✓	✓	✓	✓	✓	✓	✓
K	Clarence Rd 3.0m separate 2-way track	Route Improvement	0.416	2013 - 2015	Enterprise Zone/ LSTF	Being Delivered	✓	✓	✓	✓	✓	✓	✓	✓
L	Redcliffe Hill 3.5m separate 2-way track	Route Improvement	0.200	2014 - 2017	Major Scheme Funding	Funding secured	✓	✓	✓	✓	✓	✓	✓	✓
M	Commercial Rd 3.0m separate 2-way track	Route Improvement	0.150	2013 - 2015	LSTF	Being Delivered	✓	✓	✓	✓	✓	✓	✓	✓