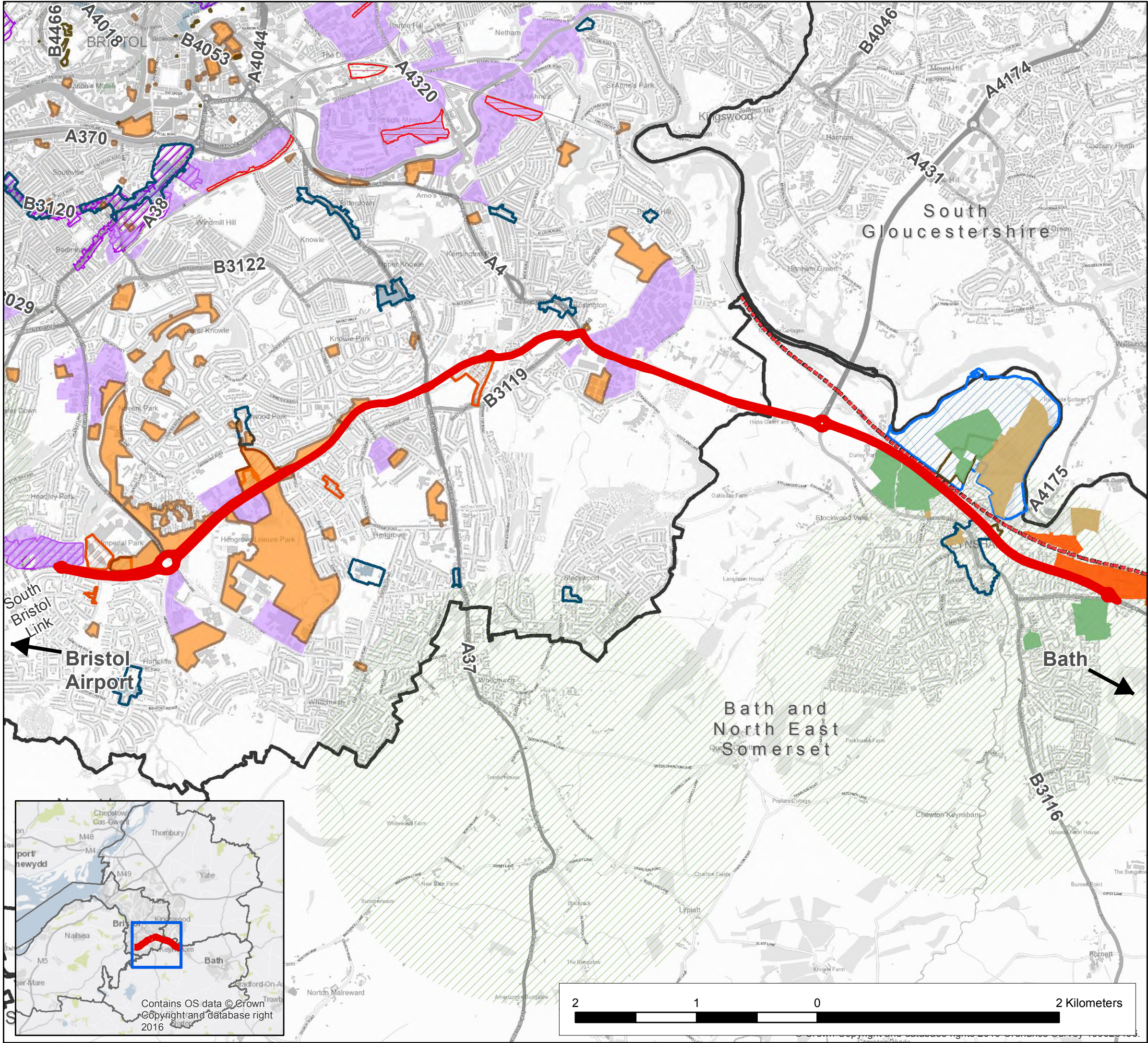


[Challenge Fund - Map of benefited areas - Employment and development.pdf](#)

[Challenge Fund - Map of benefited areas - Deprivation.pdf](#)

Challenge Fund 2017
A4 A4174

Map of benefited areas:
Development and
Employment



Bid extent

BANES Local Plan

- Railway network safeguard
- City town centres
- Core business areas
- General development sites
- Protected recreation sites
- Scheduled Ancient Monuments

BCC Local Plan

- Leisure Use Frontages
- Site Allocations
- Rail Infrastructure
- Centres
- Primary Shopping Areas
- Principal Industrial and Warehousing Areas
- Scheduled Ancient Monuments

Other development information

- Business improvement districts
- Major planning applications
- Somerdale residential development
- JSP strategic locations

Local Authorities

Note: Joint Spatial (JSP) locations are illustrative only and must not be taken to imply any specific development site or a preference for identified options

© Crown Copyright and database right 2017.
Ordnance Survey 100023406.

STRATEGIC CITY TRANSPORT

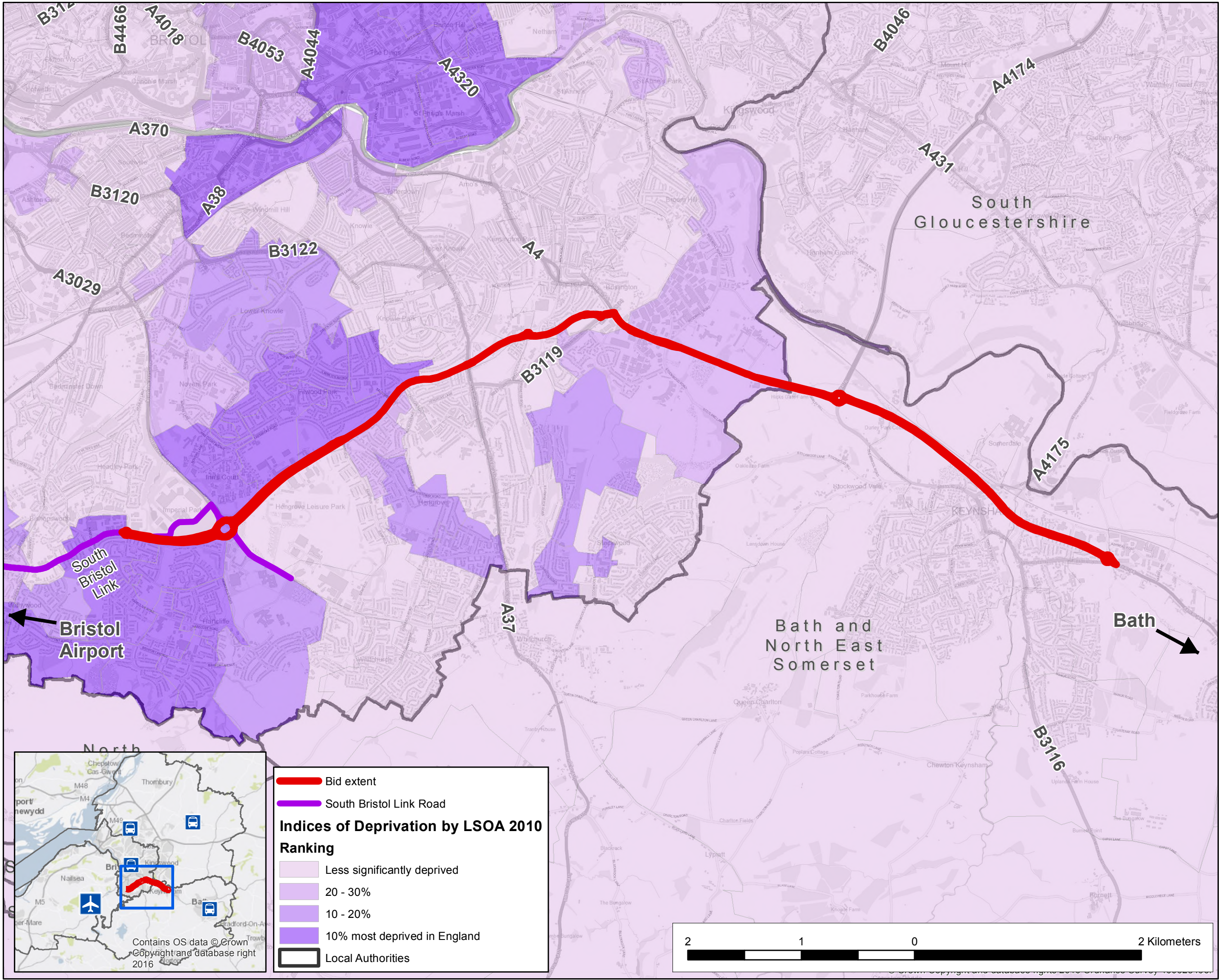
Scale : @A3 1:30,000
Date: 28/03/2017

BRISTOL CITY COUNCIL

PLACE DIRECTORATE

The provision of information by Bristol City Council does not imply a right to reproduce or commercially exploit such information without the Council's express prior written permission. Reproduction or commercial exploitation of information provided by the Council without its express permission may be an infringement of copyright.

The council is unable to grant permission to reproduce or re-use any material that is the property of third parties. Permission to reproduce or re-use such material must be obtained from the copyright holders.



Challenge Fund 2017 A4 A4174

Indicies of deprivation


Index of Multiple Deprivation (IMD) 2010 mapped at Lower Super Output Area (LSOA) level.

The Index of Multiple Deprivation Score is a relative ranking system where 1 is more deprived than 2, and so on up to 32482. The figures relate to the number of Lower Super Output Area's that cover the whole of England.

The provision of information by Bristol City Council does not imply a right to reproduce or commercially exploit such information without the Council's express prior written permission. Reproduction or commercial exploitation of information provided by the Council without its express permission may be an infringement of copyright.

The council is unable to grant permission to reproduce or re-use any material that is the property of third parties. Permission to reproduce or re-use such material must be obtained from the copyright holders.

© Blom Pictometry 2012



© Crown Copyright and database right 2017.
N Ordnance Survey 100023406.

STRATEGIC CITY TRANSPORT

Scale : @A3 1:30,000
Date: 28/03/2017



PLACE DIRECTORATE