









## Useful information

Address: Stoke Gifford, Bristol BS34 8YB

-  Car parking - 1140 spaces. Taxi rank at station entrance. If you require an accessible taxi please ask staff
-  For bus information please visit the integrated journey planner: <http://journeyplanner.travelwest.info>
-  Toilet facilities at this station
-  1st floor ticket office open Monday to Friday - 05:40 to 20:00. Saturday - 06:50 to 18:00 Sunday - 08:30 to 19:00
-  Accessible ticket machines and Set-Down / Pick up Points are located at the station entrance by the ticket office. Staff help available Monday to Friday - 04:30 to 01:45 Saturday - 05:00 to 01:15 Sunday - 05:30 to 01:45 - please request assistance from any member of staff if you have not booked assistance in advance. Assisted Travel meeting point at booking office main entrance. For further information please visit GWR website
-  Up to two dogs, cats, or other small domestic animals can travel for free. Dogs must be on a lead, or in a rigid pet carrier. All other pets must be in a pet carrier
-  Cycle storage is available this station. Bikes can be carried on our trains free of charge. For further information on travel with cycles visit [GWR.com](http://GWR.com)
-  For any further helpful train travel information visit [www.GWR.com](http://www.GWR.com)



## GWR Customer Service

For sales and support please call 03457 000 125 (06:00-23:00 every day)

For information on assisted travel, planning your journey and tickets visit [www.GWR.com](http://www.GWR.com)

Go paperless with mobile e-tickets - download the GWR app now and be more mobile.

## About us

The Severnside Community Rail Partnership is a Department for Transport Accredited Community Rail Partnership.

We are a Community Interest (not for profit) Company, working with local communities to encourage the use of local trains, to ensure that access to local stations is easy, and to enhance these stations so they provide a safe and welcoming environment. Our station improvement projects are delivered with the assistance of volunteers, schools, youth groups and the Community Payback scheme.

These leaflets have been produced in partnership with South Gloucestershire Council with support from Great Western Railway Customers and Communities Improvement fund.

 @severnsidecrp  Severnside Community Rail Partnership  
 severnsidecrp

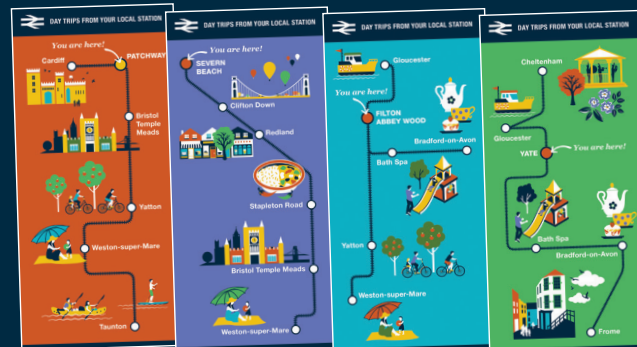


Content: Anne-Louise Perez / [yourstreetconsulting@gmail.com](mailto:yourstreetconsulting@gmail.com)  
 Design: Susan Taylor / [hello@susantaylor.design.co.uk](mailto:hello@susantaylor.design.co.uk)

All information on this leaflet correct at time of print

## Also available...

Check out our other guides on the GWR line! Explore the places you can reach from Patchway, Filton Abbey Wood, Severn Beach and Yate.



## DAY TRIPS FROM YOUR LOCAL STATION





## Day trips from Bristol Parkway!

Kick off your adventure by train – sit back, get comfortable, chat, connect and relax before you've even reached your destination.

In this guide you'll find a few ideas to create a truly special day out for you, your family or friends. We've picked activities to suit all budgets and taste (many are free), whether you're after a cultural experience, an active adventure or a shopping day.

With most destinations less than an hour away, and all journeys direct, you'll have time to make the most of your trip.

So get planning, hop on board, and let the fun begin...

### Calling at... Cheltenham Spa 30 mins

Cheltenham is renowned for its shopping, theatre and world class festivals, making it a great day out. The green and leafy Honeybourne Line is an easy flat walk starting from the train station. It plays an important wildlife corridor with excellent views and a number of exciting play areas to stop at. On route you'll come across the Winston Churchill Memorial Garden, a great place to stop and picnic while the kids explore the woodlands and sculptures. In town visit the Wilson Museum with its fine art and exhibitions for all ages.

- Honeybourne Line\* ● Wilson Art Gallery\*
- Shopping ● Winston Churchill Memorial Gardens\*

\* FREE

### Calling at... Cardiff 35 mins

Travelling to the capital of Wales, you'll arrive right in the city centre and best of all, you can explore it all on foot from the station. Discover this city's rich and ancient history at the museum. Unwind & enjoy a picnic in Bute Park - the "green heart of the city". Explore the vibrant waterfronts & their cafes, bars & restaurants and heritage sights. Or get sporty at Cardiff Bay's International Sports Village with its fantastic array of activities including their 50m pool with slides.

- Cardiff Story Museum\* ● Cardiff Castle ● Bute Park\*
- Waterfronts\* ● International Sports Village

\* FREE

### Calling at... Swindon 25 mins

Great Western Railway put Swindon firmly on the map in 1841. The Designer Outlet is a fashionistas paradise and only a 15 minute walk from the train station - it boasts a huge variety of shops, restaurants and cafes. Opposite is the award winning STEAM Museum, home to a collection of some of the greatest steam locomotives ever built, a 'drive' train simulator and an interactive signal box. Learn about those who built, operated and travelled on the GWR. For art lovers the Swindon Museum & Art Gallery is situated in the old town. Oasis Lagoon swimming pool is 5 minutes from the station, featuring a wave machine & slides.

- Swindon Designer outlet
- Swindon Museum & Art Gallery\*
- Oasis Lagoon Leisure Centre ● STEAM museum

\* FREE

### Calling at... Bath Spa 30 mins

Discover a vibrant city with contemporary culture and a rich historical heritage. Children will enjoy the vast adventure playground with climbing frames, zip lines and a skateboard area. Enjoy a quick picnic, feed the ducks, and then head back in to town and take your budding astronomers to the house of William Herschel - the man who discovered planet Uranus. Just a skip away is 'The Egg', Bath's award-winning theatre for children, young people and their families - they put on an extravaganza of performances.

- Royal Victoria Park\* ● The Egg theatre
- Herschel Museum of Astronomy

\* FREE

### Calling at... Yatton 35 mins

The picturesque Strawberry Line Cycle Path to Cheddar begins from Yatton train station. With bike hire from the station itself it's never been easier to start your cycling adventure. On this flat and family friendly path you'll pedal through the famous Thatchers Cider apple orchards. This picture perfect countryside is ideal for picnics and has a number of stops along the way to refresh with ice creams, you could even sample the famous cider! Look out for slow worms, newts and dragonflies - this route is an oasis of wildlife.

- Strawberry Line Café & Cycle hire
- Thatcher Cider Heritage Centre\* ● Nature spotting\*

\* FREE

## Best value fares

### Child train fares

Children aged 5-15 get 50% off fares. Under 5s travel free

### Family & Friends Railcard

Save money with a Family & Friends Railcard which costs £30. Up to 4 adults & 4 children can travel together on one card (you do not have to be related). Adults save 1/3 and children aged 5 to 15 years get a 60% discount on kids' fares. For more information & ways to save with other Railcards, visit [www.railcard.co.uk](http://www.railcard.co.uk)

### Top offers when you travel by train - visit [www.GWR.com](http://www.GWR.com) to find out more

- Thermae Bath Spa - 4 hours for the price of 2 hours
- 2 for 1 Bath Glass blowing
- 2 for 1 entry to STEAM Museum, Swindon

### GroupSave

Save money when travelling in a group with GroupSave. Get 1/3 off tickets when between 3 and 9 people travel together