



Travelwest Business Travel Awards 2019

Bath & North East
Somerset, Bristol,
North Somerset and South
Gloucestershire Councils,
working with the
Department for Transport



Travelwest Business Awards 2019

Introduction

from your Master of Ceremonies

Sara Sloman

Zero Carbon Emissions Lead
at Foot Anstey



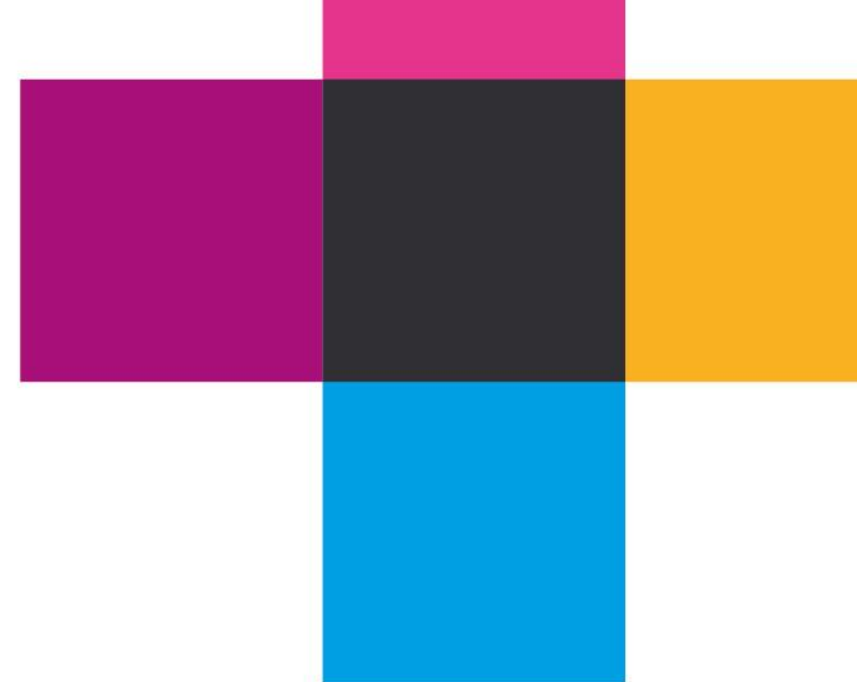
Bath & North East
Somerset, Bristol,
North Somerset and South
Gloucestershire Councils,
working with the
Department for Transport



Travelwest Business Awards 2019

Housekeeping

- Photographs being taken throughout the event
- Please switch your phone to silent
- Fire exits
- Free wifi: [GPevent123](#)
- [#TWBawards19](#)



Bath & North East
Somerset, Bristol,
North Somerset and South
Gloucestershire Councils,
working with the
Department for Transport



Opening remarks

from

Lucy Shomali

Director of Development and Environment
North Somerset Council

Bath & North East
Somerset, Bristol,
North Somerset and South
Gloucestershire Councils,
working with the
Department for Transport



Travel Plan Accreditations 2019



Bath & North East
Somerset, Bristol,
North Somerset and South
Gloucestershire Councils,
working with the
Department for Transport

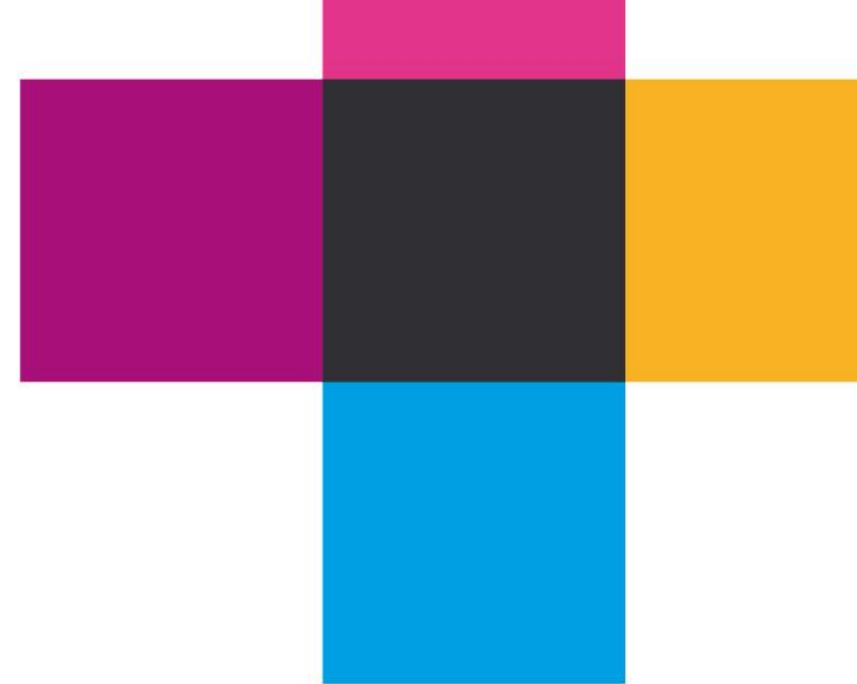
travelwest+



- Bronze
- Silver
- Silver Star
- Gold



Bath & North East
Somerset, Bristol,
North Somerset and South
Gloucestershire Councils,
working with the
Department for Transport



North Bristol NHS Trust

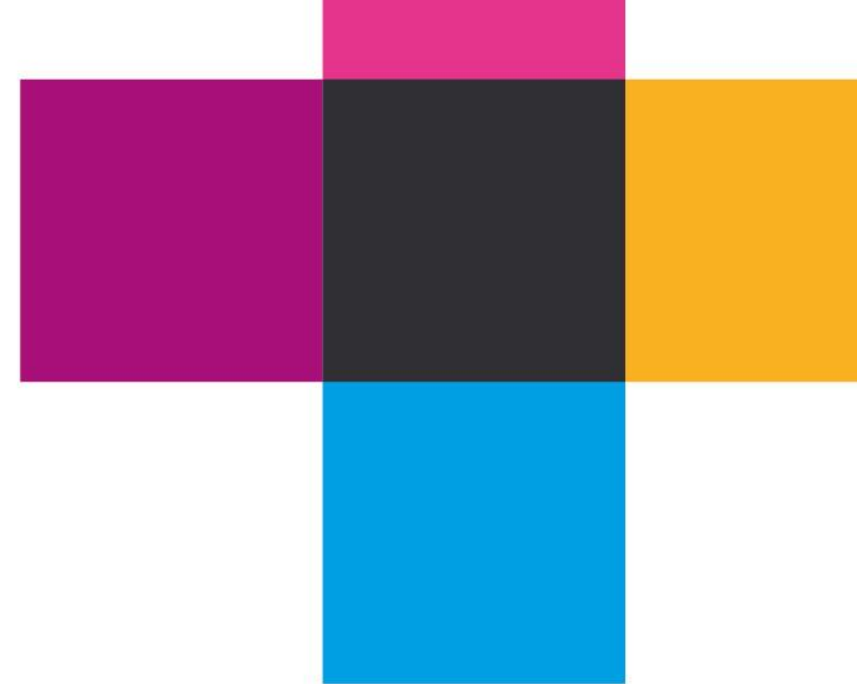


Gold



Support with Travel Plans

www.travelwest.info/businesses



Bath & North East
Somerset, Bristol,
North Somerset and South
Gloucestershire Councils,
working with the
Department for Transport



Key note speaker:

Dr Caroline Bartle
UWE Bristol

Setting the scene:

How is collaboration between businesses and local authorities supporting sustainable travel?

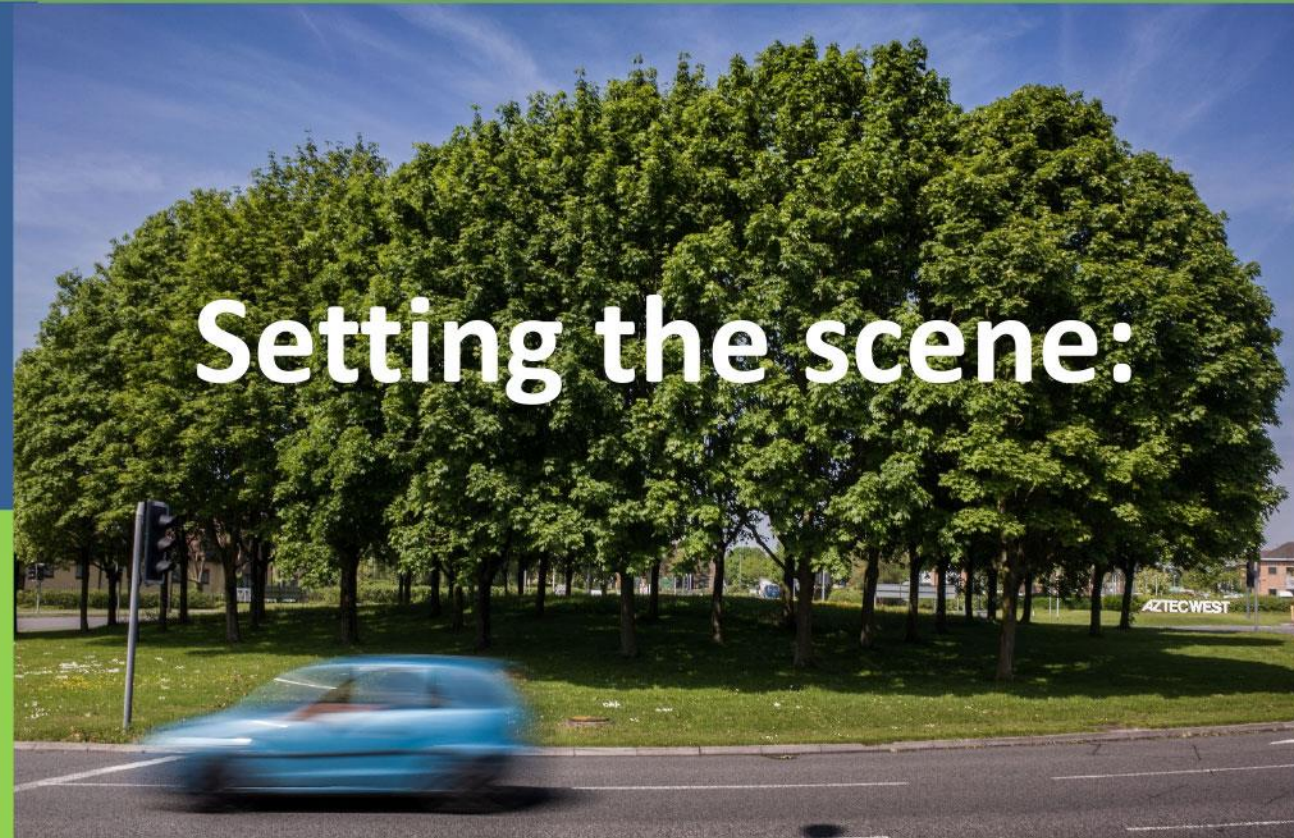


Bath & North East
Somerset, Bristol,
North Somerset and South
Gloucestershire Councils,
working with the
Department for Transport

**Dr Caroline
Bartle**

**Centre for
Transport and
Society**

**Travelwest
Business
Travel
Awards 2019**



Setting the scene:

**How is collaboration between businesses
and local authorities supporting
sustainable travel?**

**UWE
Bristol**

University
of the
West of
England



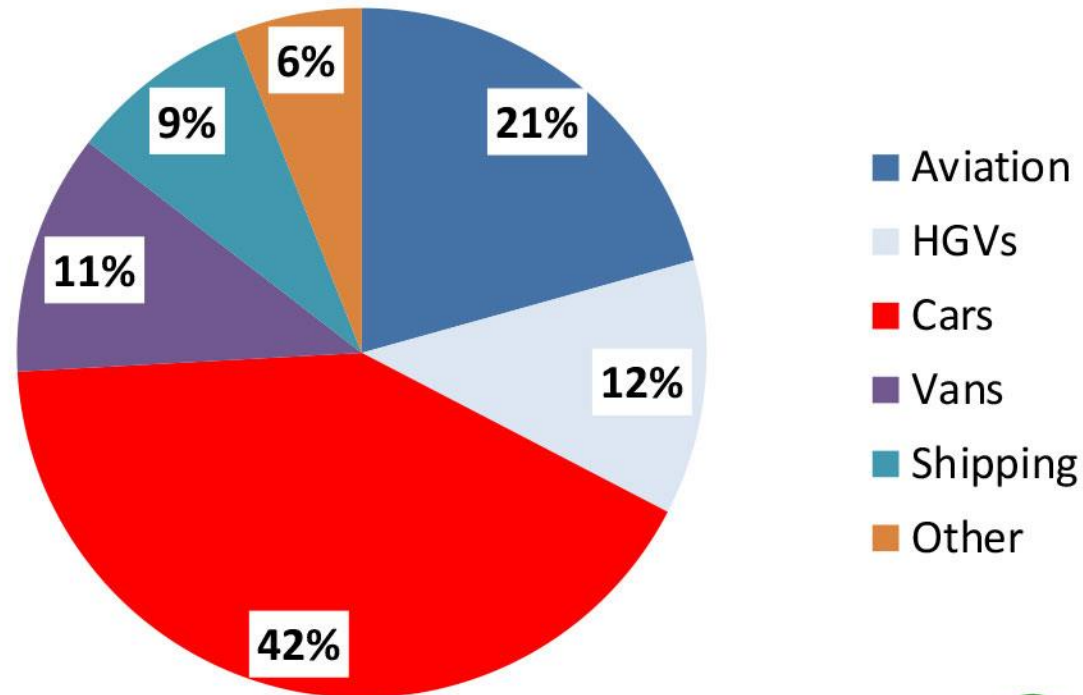
**Centre for
Transport &
Society**

The need to act:

Climate change

Domestic transport generates **28%** of UK GHG emissions.

Transport GHG emissions by mode (2016)



Source: National
Environmental
Emissions Inventory
(2019)

The need to act:

Clean air

- Air pollution in UK cities is caused primarily by road transport:
 - NO_2 , NO_x
 - Particulate Matter (PM_{10} , $\text{PM}_{2.5}$)



Photo: Sam Saunders

- The combined impact of these pollutants on mortality in the UK is estimated at between 28,000 and 36,000 early deaths per year.
- In Bristol (2011) the equivalent of 200 to 260 deaths are estimated to be attributable to anthropogenic $\text{PM}_{2.5}$ and NO_2 .

Source: Bristol City Health and Economic Impact Assessment study, Kings College London, 2019

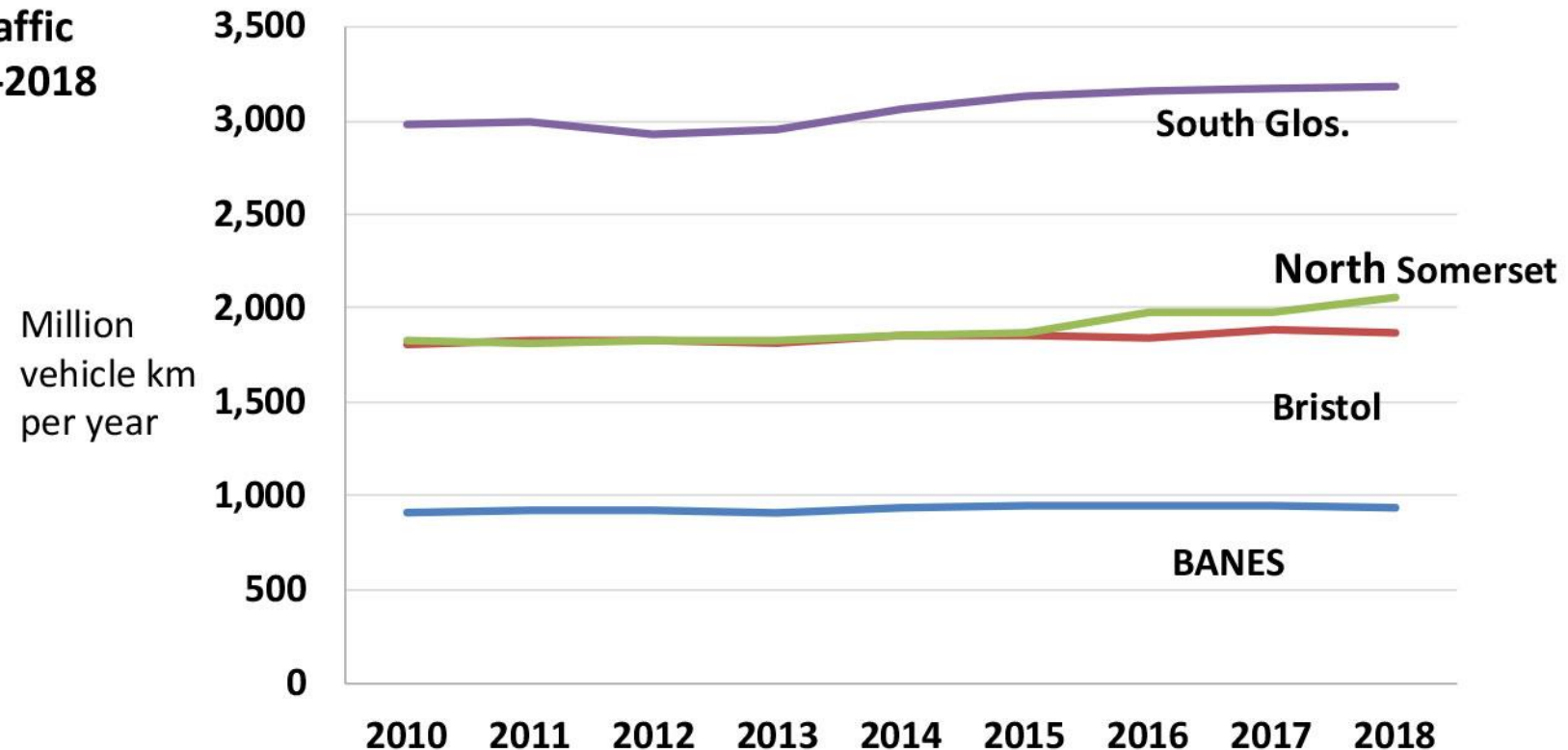
Traffic in the West of England

Bath and North East Somerset	8.3%
Bristol	8.6%
North Somerset	4.8%
South Gloucestershire	6.7%

**Projected population growth
between 2010 and 2017**

Source: ONS, July 2018

**Car traffic
2010 -2018**



Source: Department for Transport

The importance of collaboration across sectors



Sustainable transport:

What have local, collaborative measures achieved so far?

- Local Sustainable Transport Fund (LSTF), 2011-16
- Sustainable Travel Transition Year, 2016-17
- Access WEST, 2017-2020



The LSTF and Access WEST

Support for businesses

- Employer grants (50% funding for, e.g. cycle facilities)
- Travel West 'Roadshows'
- Dr Bike cycle repairs
- Cycle repair kits
- Cycle loans
- Electric pool vehicles
- Electric vehicle recharging points
- Sustainable travel awards
- Lift-share services

Complementary to:

- Local Growth Fund
- Cycling Ambition Fund etc.

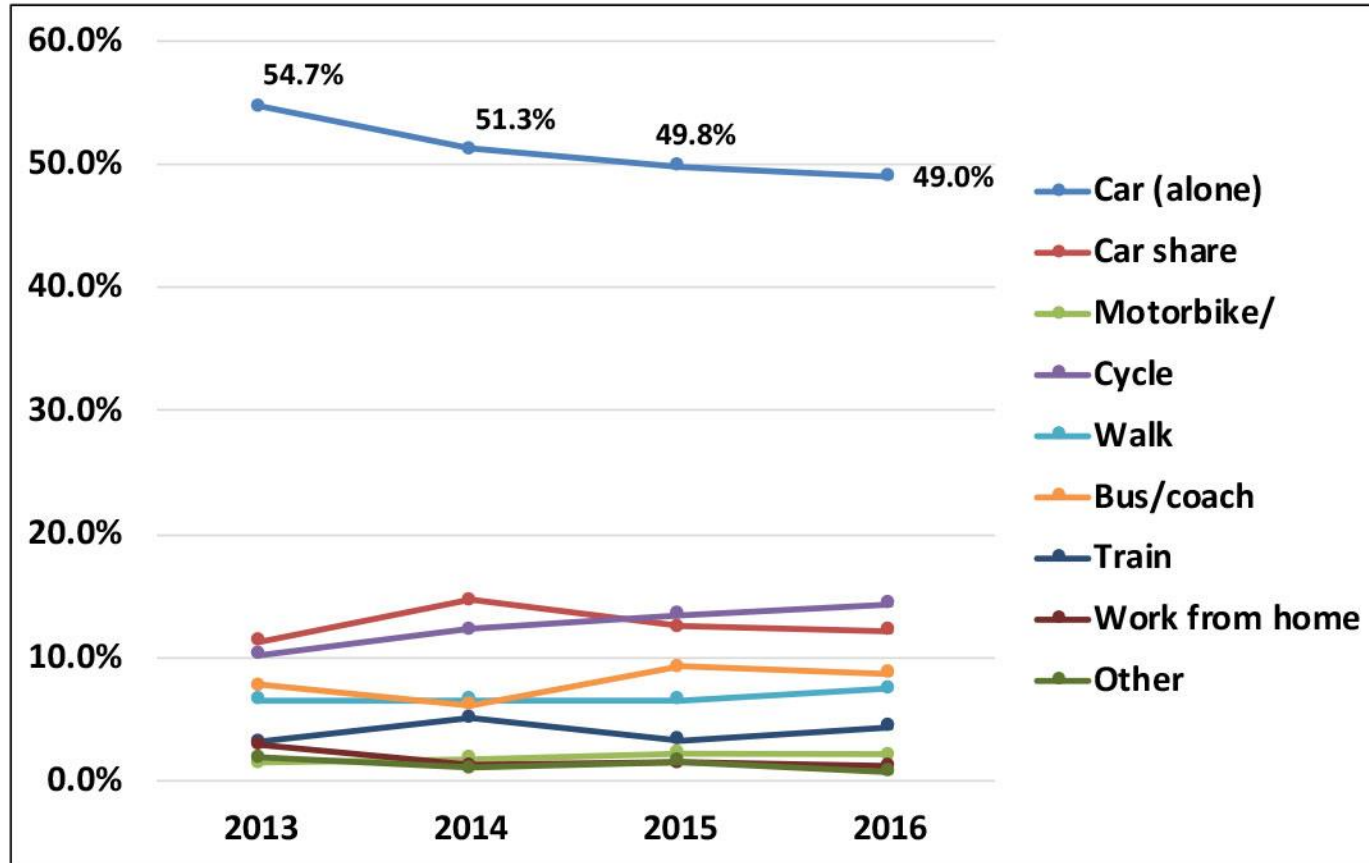


travelwest+

LSTF Evaluation

Commute mode change 2013-16 (Example: North Fringe)

2013-2016 Travel to Work surveys 'How did you travel to work today?'



Response numbers
(North Fringe)

2013	3,701
2014	8,865
2015	5,070
2016	5,304

LSTF evaluation

Significant reductions in commuter car-use occurred when:

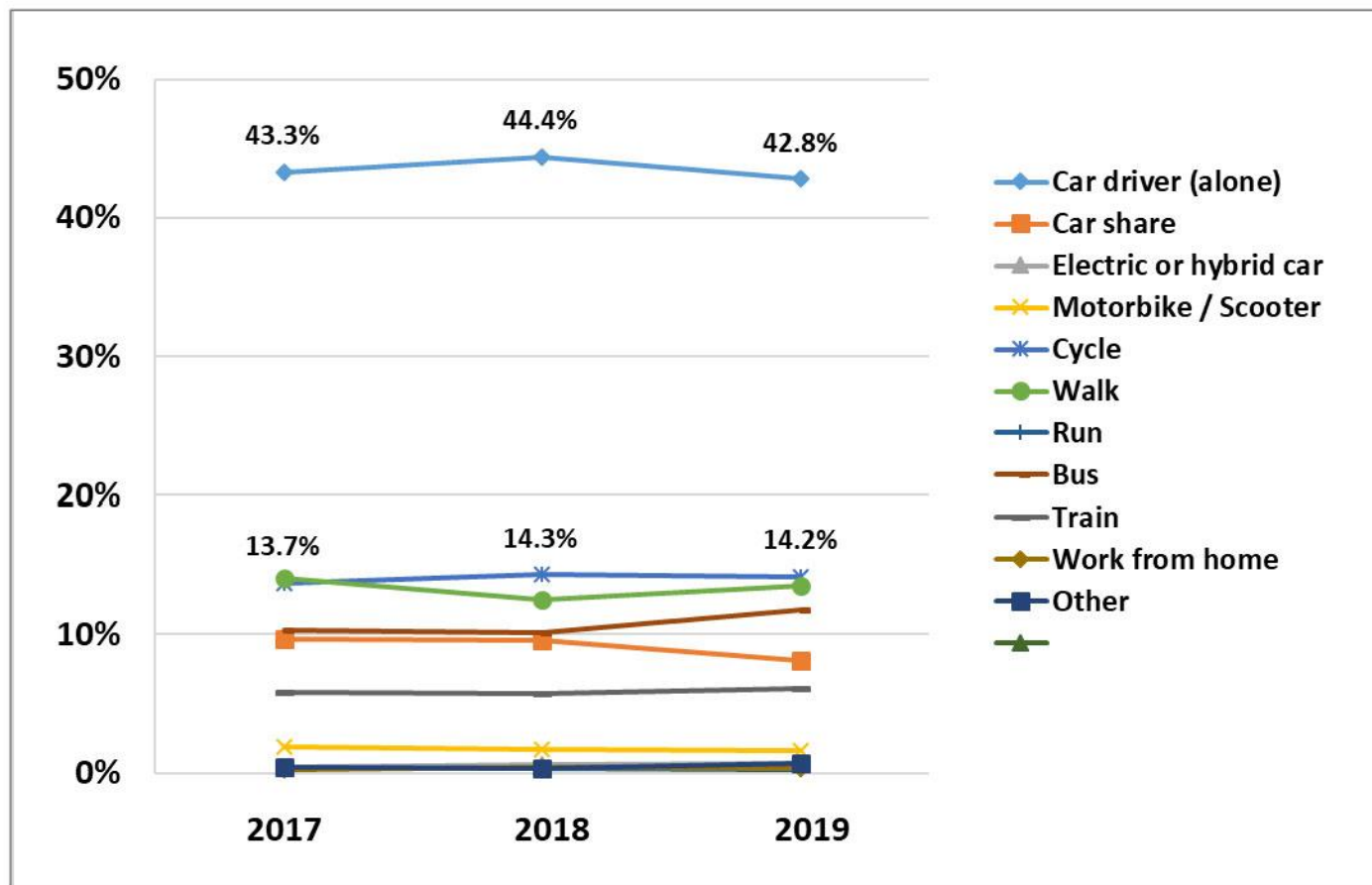
LSTF 'pull factors' (incentives) were used in parallel with 'push factors' (e.g. parking restraints).



Access WEST Evaluation

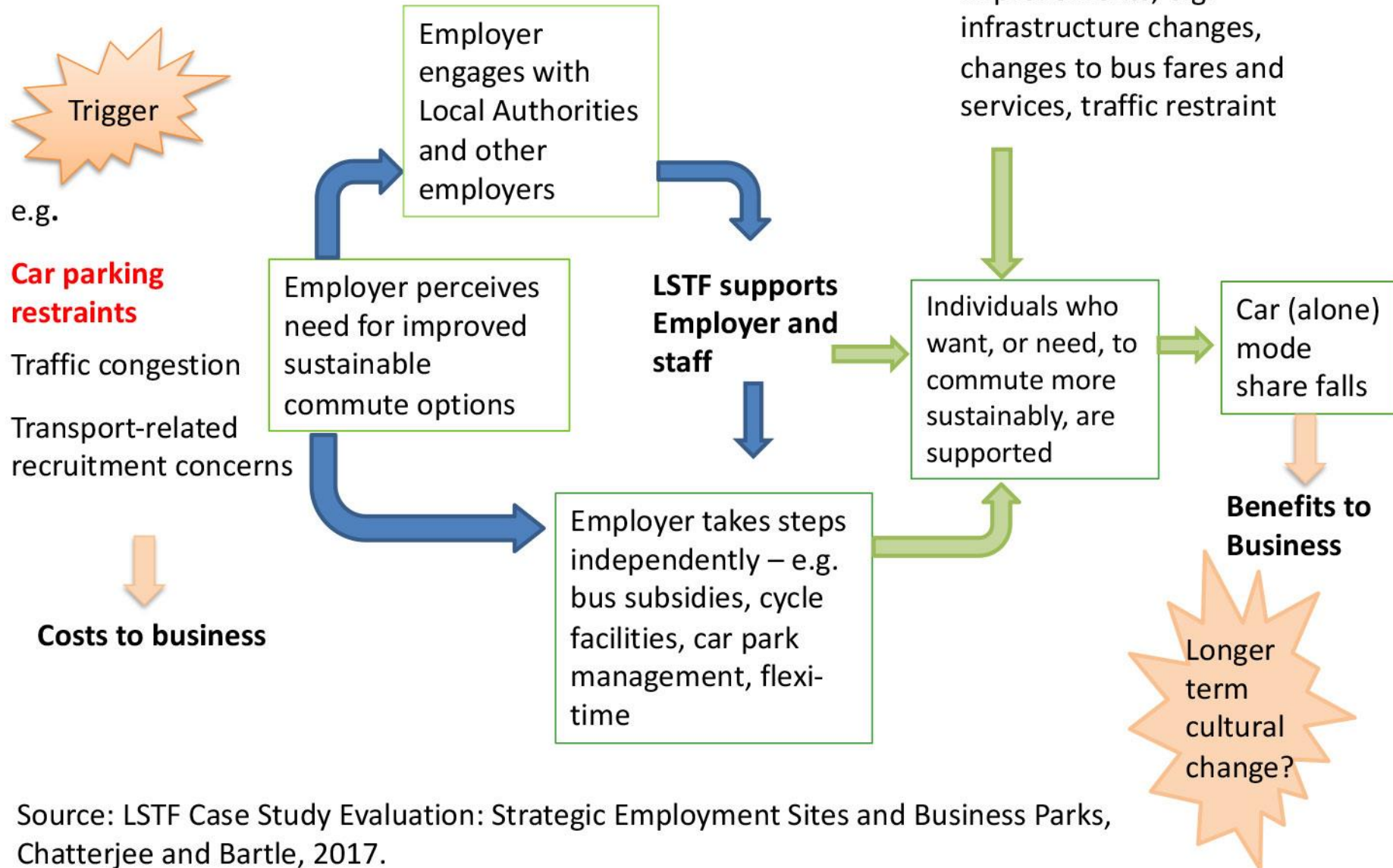
Commute mode share 2017-2019 (West of England)

2017-2019 Travel to Work surveys 'How do you normally travel to work?'



Response numbers (four Authorities)	
2017	21,332
2018	15,519
2019	22,535

Virtuous circle of collaboration



Source: LSTF Case Study Evaluation: Strategic Employment Sites and Business Parks, Chatterjee and Bartle, 2017.

What still needs to be done?

We cannot be complacent!

“The UK is not on course to meet the legally binding fourth and fifth carbon budgets.” (Lord Deben, Chair of the Climate Change Committee, 2018)

- Added challenges of growth in population and traffic levels in parts of the West of England.
- **The type of transport initiatives we are celebrating tonight were never more necessary!**



Key note speaker:

Carl Nicholson

North Somerset Council

North Somerset's Road to Zero



Bath & North East
Somerset, Bristol,
North Somerset and South
Gloucestershire Councils,
working with the
Department for Transport

Carl Nicholson

North Somerset Council Integrated transport Unit Manager



North Somerset Council,
A Journey towards Zero Fleet Emissions

Some interesting EV Facts

- ▶ Electric vehicles first appeared in the early 1830's! Nearly 200 years ago!
- ▶ There are already more vehicle charging stations than fuel pumps in the UK! (a year ahead of the predicted timescale!)

How far can you travel for £5

- ▶ £5 worth of electric will typically propel an EV 100 miles!
- ▶ £5 worth of diesel averages roughly 55 miles!

lead by example!

These are both my cars!



‘choosing to drive one of our fleet Internal combustion engine vehicles, is the equivalent of spending an additional 10p every mile compared to an electric vehicle’

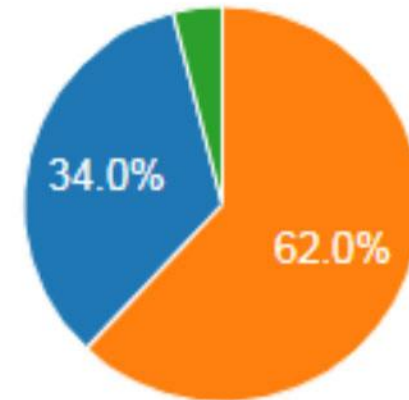


Vehicle Overview

Rapid shift towards electrification, now 34 EV's in 36 months, plan to acquire another 10 to 20 in the next 18 months depending on business cases and evaluation of utilisation.



Fuel Types



Battery Electric Vehicle (BEV)

■ Diesel ■ Petrol

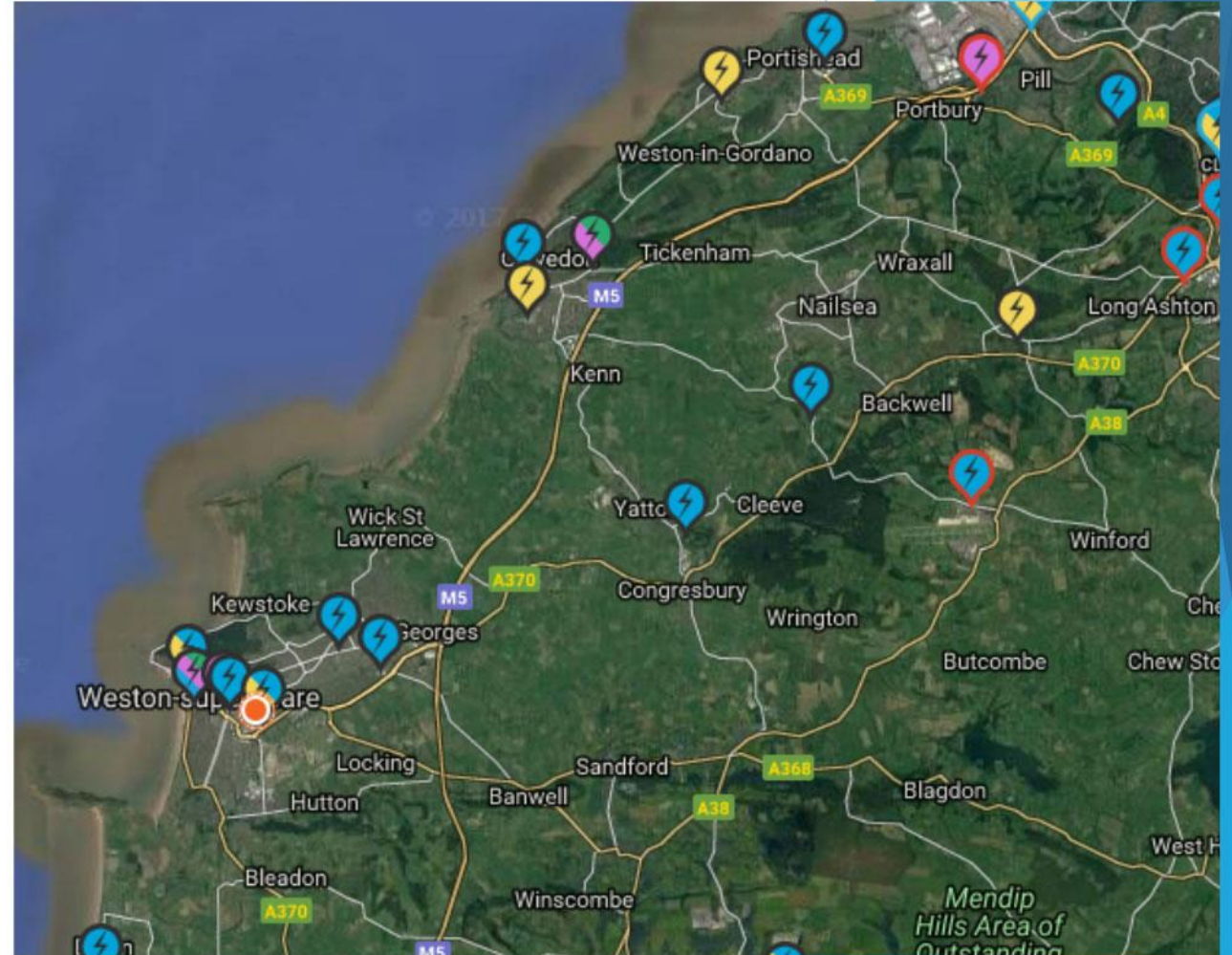
Cost Savings last year

Fuel Saving	-£22,835.93
Maintenance saving	-£11,873.31
Total	-£34,709.24



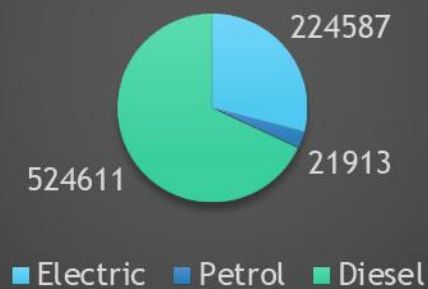
Why do EV's work for North Somerset Council

- ▶ Majority of trips are Return to base
- ▶ Operating Area is less than 50 miles around the district
- ▶ Good infrastructure in the district never more than 10 miles from a charger!
- ▶ Healthy mix of road types ranging from motorway and fast A roads
- ▶ Fleet Utilisation rates are not excessive.

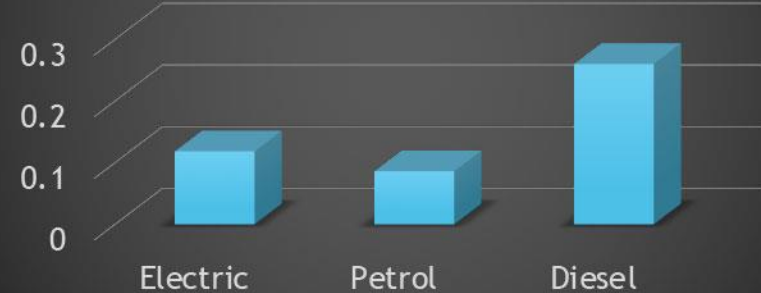


Fleet Statistics

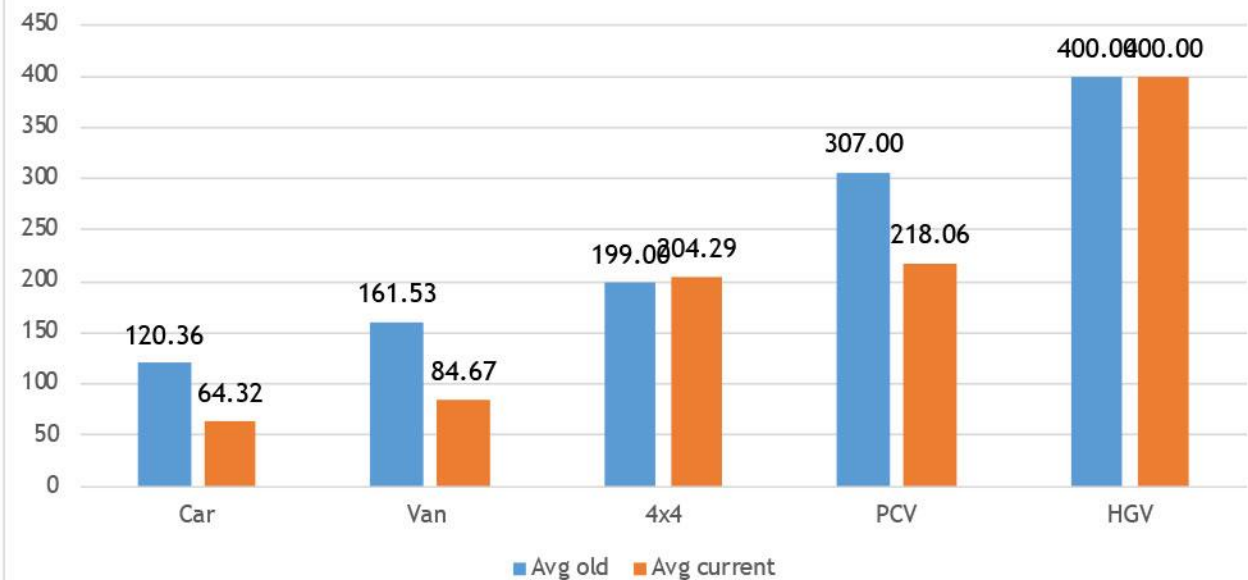
Annual Mileage by Fuel type



Pence Per mile avg by fuel type



Average CO2 g/km ratings by type of vehicle

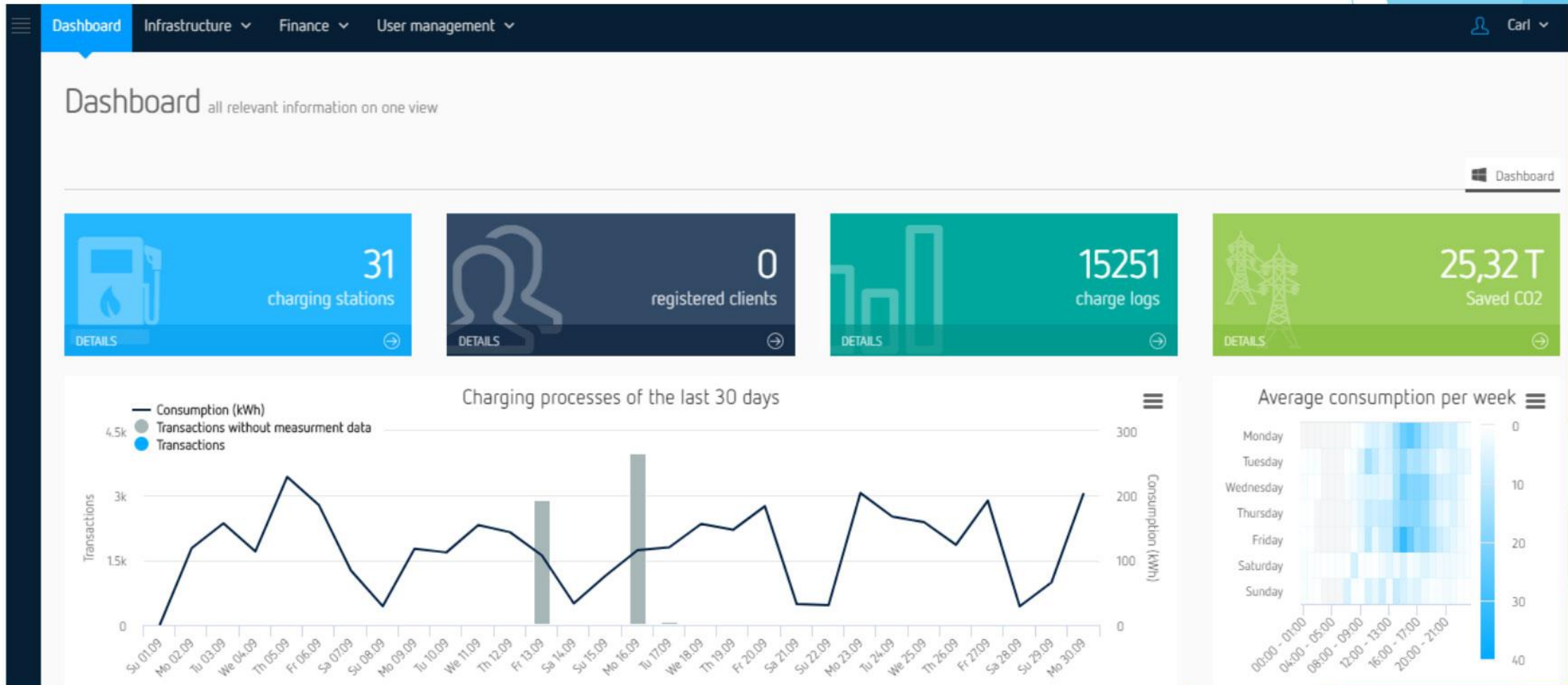


Useful advice for the introduction of EV's on fleet

- ▶ Take advantage of Demonstration vehicles
 - ▶ Beware of lead times
 - ▶ Train the trainers
-
- ▶ Timing
 - ▶ Infrastructure
 - ▶ Education



Charge point network Usage



What Next?

- ▶ Ambitious plan to double our deployment of EV's from 34 to 68 by 2024!
- ▶ Introduction of vehicle to grid charging at corporate depots within 12 months, hopefully integrated with Solar.
- ▶ Expansion of the local charging network to include a super hub in Portishead.



Travelwest Challenge 2019 Winners

Bath & North East
Somerset, Bristol,
North Somerset and South
Gloucestershire Councils,
working with the
Department for Transport

HOP ON BOARD....



...the Travelwest Challenge!



DAC Beachcroft 250+ employees



travelwells



Triodos Bank 51-249 employees



travelwest+



GCP Chartered Architects 11 – 50 employees



travelwest+



Key Transport Consultants 1 – 10 employees



Paul Basham Associates 1 – 10 employees



Congratulations to all winners

We are going to be running many more active
travel challenges in 2020!

HOWEVER YOU GET TO WORK... TRAVELWEST



Register your business for the Travel to Work Survey now!
travelwest.info/preregistration

travelwest 
www.travelwest.info



Register your organisation to take part:

www.travelwest.info/preregistration

Bath & North East
Somerset, Bristol,
North Somerset and South
Gloucestershire Councils,
working with the
Department for Transport



Key note speaker:

Joanna Ward

Women in Transport

Why we need to do better?



Bath & North East
Somerset, Bristol,
North Somerset and South
Gloucestershire Councils,
working with the
Department for Transport



elliottwood

engineering a better **society**

Why do we need to do better?



elliottwood

Why do we need to do better?



Why do we need to do better?



Why do we need to do better?



elliottwood

Why do we need to do better?

- j.ward@elliottwood.co.uk
- Elliott Wood <https://www.elliottwood.co.uk/>
- Women in Transport <https://www.womenintransport.com/>
- Transport Planning Society <https://tps.org.uk/>
- Twitter @JRWWRJ



elliottwood

engineering
a better **society**



Travelwest Business Travel Awards 2019

Bath & North East
Somerset, Bristol,
North Somerset and South
Gloucestershire Councils,
working with the
Department for Transport

travelwest+



Long-term Commitment to Sustainable Travel

Recognising companies offering continued support to employees to reduce car travel



Bath & North East
Somerset, Bristol,
North Somerset and South
Gloucestershire Councils,
working with the
Department for Transport

travelwest+



Long-term Commitment to sustainable travel

GKN Aerospace

One of the first to install bicycle maintenance stands and e-bike charging lockers!



Bath & North East
Somerset, Bristol,
North Somerset and South
Gloucestershire Councils,
working with the
Department for Transport



Long-term Commitment to sustainable travel

WSP

Ran a Skype competition amongst the Executive Leadership Team



Bath & North East
Somerset, Bristol,
North Somerset and South
Gloucestershire Councils,
working with the
Department for Transport

travelwest+



Long-term Commitment to sustainable travel

Solarsense

Practicing what they preach with EV Chargers and E-bike cycle parking on site – all powered by solar!



Bath & North East
Somerset, Bristol,
North Somerset and South
Gloucestershire Councils,
working with the
Department for Transport



Long-term Commitment to sustainable travel

Rolls-Royce

Bike User Group is now at 604 members!



Bath & North East
Somerset, Bristol,
North Somerset and South
Gloucestershire Councils,
working with the
Department for Transport



Long-term Commitment to sustainable travel

Royal United Hospitals Bath

All new starters are provided with sustainable travel information to the RUH



NHS
Royal United Hospitals Bath
NHS Foundation Trust

Bath & North East
Somerset, Bristol,
North Somerset and South
Gloucestershire Councils,
working with the
Department for Transport

travelwest+



Long-term Commitment to sustainable travel

Amazon

Have worked with Stagecoach to provide their own bus service



Bath & North East
Somerset, Bristol,
North Somerset and South
Gloucestershire Councils,
working with the
Department for Transport



Long-term Commitment to sustainable travel

Bristol Airport

Providing subsidised bus travel for all staff



Bath & North East
Somerset, Bristol,
North Somerset and South
Gloucestershire Councils,
working with the
Department for Transport



Long-term Commitment to sustainable travel

Computershare

Organise yearly charity ride 'On yer Bike'



 **Computershare**

Bath & North East
Somerset, Bristol,
North Somerset and South
Gloucestershire Councils,
working with the
Department for Transport

travelwest+



Long-term Commitment to sustainable travel

DAC Beachcroft

Have set up their own inter-office Step Challenge



Bath & North East
Somerset, Bristol,
North Somerset and South
Gloucestershire Councils,
working with the
Department for Transport



Long-term Commitment to sustainable travel

North Bristol NHS Trust

Now 19% of staff cycle to work!

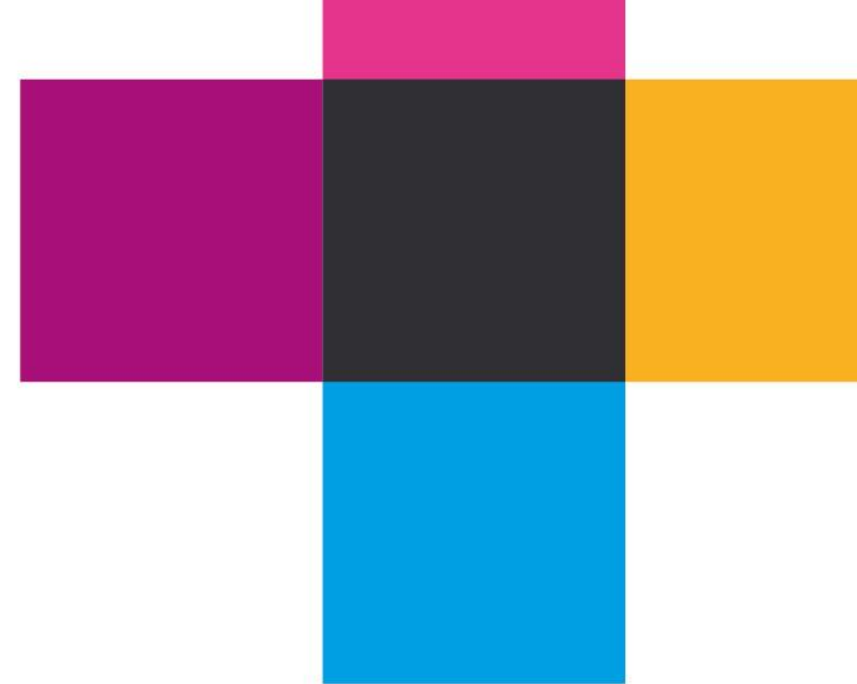


Bath & North East
Somerset, Bristol,
North Somerset and South
Gloucestershire Councils,
working with the
Department for Transport



Highly Commended

Long-term Commitment to
sustainable travel 2019



Bath & North East
Somerset, Bristol,
North Somerset and South
Gloucestershire Councils,
working with the
Department for Transport



North Bristol NHS Trust & Computershare



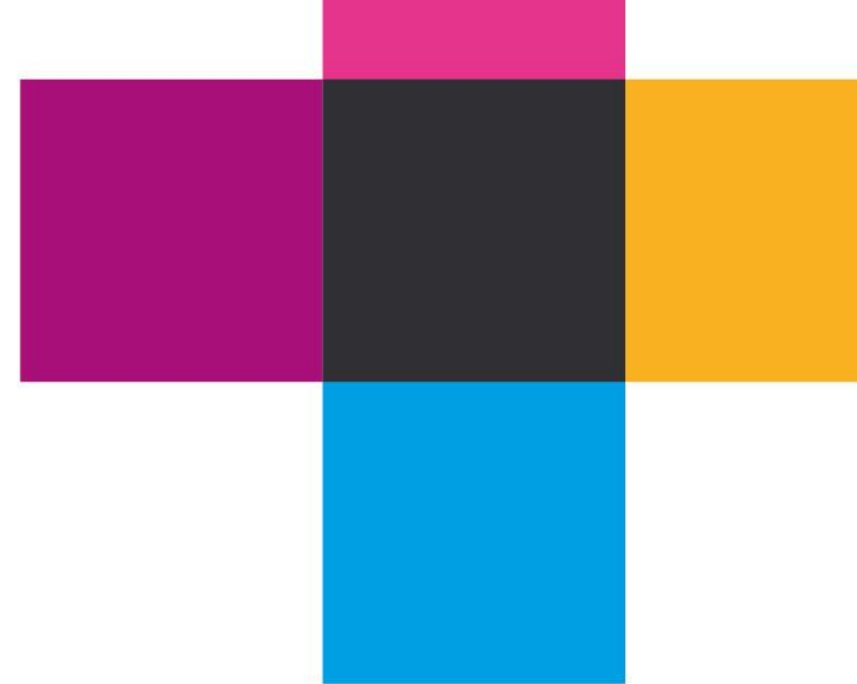
Bath & North East
Somerset, Bristol,
North Somerset and South
Gloucestershire Councils,
working with the
Department for Transport

travelwest+



Winner

Long-term Commitment to sustainable travel 2019



Bath & North East
Somerset, Bristol,
North Somerset and South
Gloucestershire Councils,
working with the
Department for Transport



travelwest+



Rolls-Royce



Most Improved Workplace small, medium, large

Recognising improvements in the workplace
environment to encourage sustainable travel



Bath & North East
Somerset, Bristol,
North Somerset and South
Gloucestershire Councils,
working with the
Department for Transport

travelwest+



Most Improved Workplace

Bristol Airport

Large 250+ employees

Have made major improvements to support staff to use public transport and cycle for more of their work journeys



Bath & North East
Somerset, Bristol,
North Somerset and South
Gloucestershire Councils,
working with the
Department for Transport



Most Improved Workplace

Baker Hughes

Large 250+ employees

Staff have been enjoying a free breakfast and a hot drink when travelling in sustainably!



Bath & North East
Somerset, Bristol,
North Somerset and South
Gloucestershire Councils,
working with the
Department for Transport



Most Improved Workplace

Amazon

Medium 51-250 employees

40% of their workforce now use sustainable travel – this equates to almost 200 less cars in Bristol each day!



Bath & North East
Somerset, Bristol,
North Somerset and South
Gloucestershire Councils,
working with the
Department for Transport

travelwest+



Most Improved Workplace

Southmead House

Medium 51-250 employees

Three electric bikes purchased over the last 5 years have accumulated over 10,000 miles between them!



Bath & North East
Somerset, Bristol,
North Somerset and South
Gloucestershire Councils,
working with the
Department for Transport



Most Improved Workplace

Emmaus

Small 1-50 employees

Now rent their car parking spaces on 'Just Park'



Bath & North East
Somerset, Bristol,
North Somerset and South
Gloucestershire Councils,
working with the
Department for Transport

travelwest+



Most Improved Workplace

Collins Aerospace

Small 1-50 employees

Have a wealth of facilities in place to support sustainable travel at their new site – including secure cycle lockers!



Collins Aerospace



Bath & North East
Somerset, Bristol,
North Somerset and South
Gloucestershire Councils,
working with the
Department for Transport



Most Improved Workplace

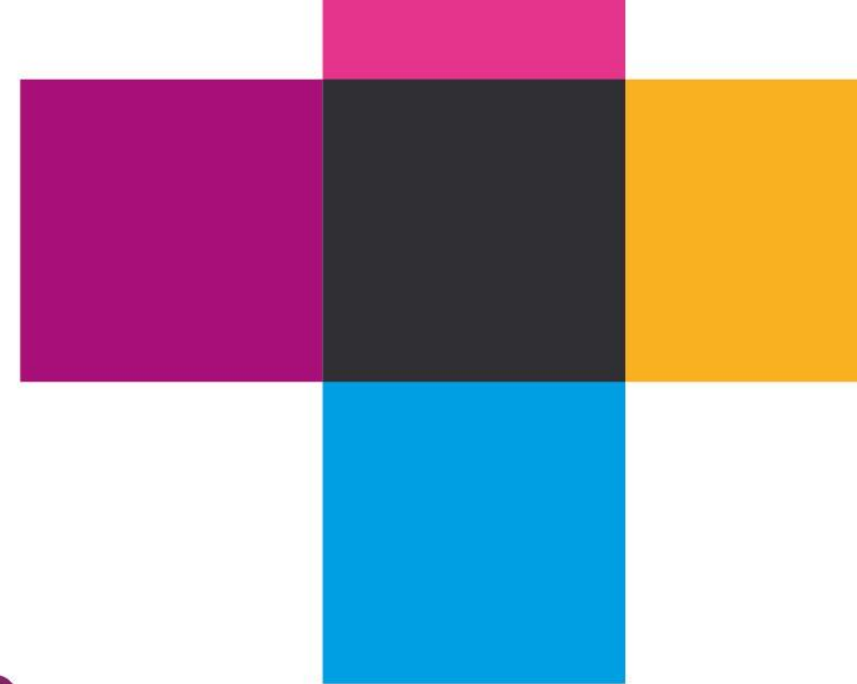
Solarsense

Small 1-50 employees

Installation of EV Chargers,
E-bike parking & a sustainable
travel notice board –
all in 2019



Bath & North East
Somerset, Bristol,
North Somerset and South
Gloucestershire Councils,
working with the
Department for Transport



Winner

Most Improved Workplace 2019 – Large

Bath & North East
Somerset, Bristol,
North Somerset and South
Gloucestershire Councils,
working with the
Department for Transport



travelwest+



Bristol Airport Large 250+ employees



Winner

Most Improved Workplace 2019 – Small & Medium

Bath & North East
Somerset, Bristol,
North Somerset and South
Gloucestershire Councils,
working with the
Department for Transport



travelwest+



Emmaus Small 1-50 employees



Best Motivational Campaign

Recognising success in motivating staff to make and sustain behavioural change



Bath & North East
Somerset, Bristol,
North Somerset and South
Gloucestershire Councils,
working with the
Department for Transport



Best Motivational Campaign

Avon & Wiltshire Mental Health Partnership

Introduced incentive scheme for staff to track virtual journey from Kingswood, Bristol to the Taj Mahal!



Bath & North East
Somerset, Bristol,
North Somerset and South
Gloucestershire Councils,
working with the
Department for Transport



Best Motivational Campaign

eat:Festivals

Teamed up with Pokemon to encourage walking to all their events!



Bath & North East
Somerset, Bristol,
North Somerset and South
Gloucestershire Councils,
working with the
Department for Transport



Best Motivational Campaign

WSP UK

Ran a successful May Step Challenge



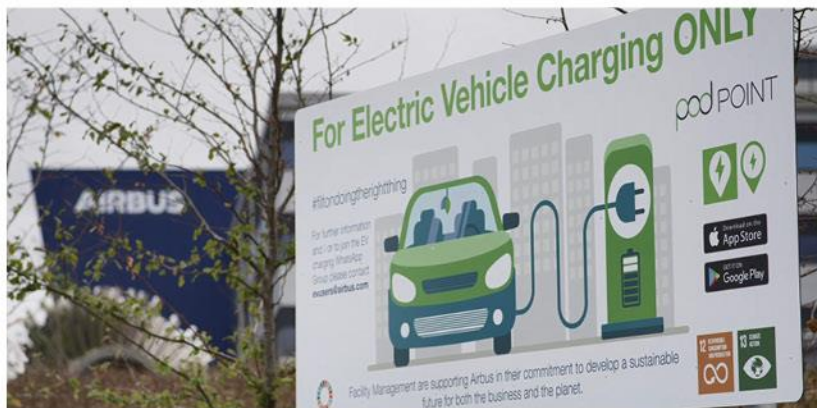
Bath & North East
Somerset, Bristol,
North Somerset and South
Gloucestershire Councils,
working with the
Department for Transport



Best Motivational Campaign

Airbus

Ran a fantastic EV day with 23EV's, e-bikes and e-motorbikes for staff to try!



Bath & North East
Somerset, Bristol,
North Somerset and South
Gloucestershire Councils,
working with the
Department for Transport



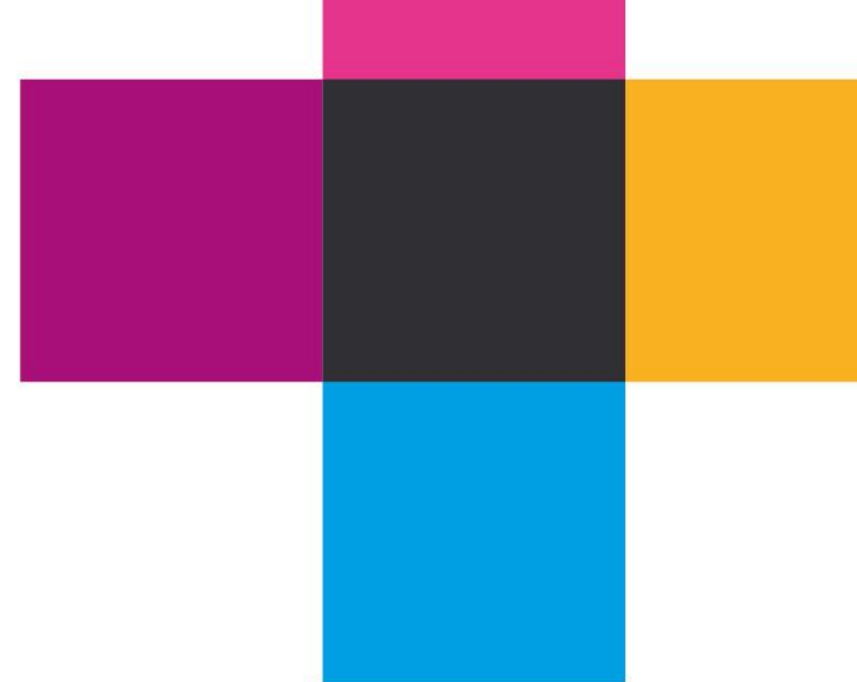
Highly Commended

Best Motivational Campaign 2019

Bath & North East
Somerset, Bristol,
North Somerset and South
Gloucestershire Councils,
working with the
Department for Transport



WSP UK



Bath & North East
Somerset, Bristol,
North Somerset and South
Gloucestershire Councils,
working with the
Department for Transport

travelwest+



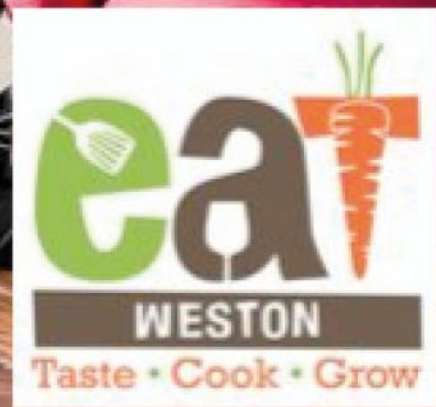
Winner

Best Motivational Campaign 2019

Bath & North East
Somerset, Bristol,
North Somerset and South
Gloucestershire Councils,
working with the
Department for Transport



travelwest+



eat:Festivals



Most Innovative Sustainable Travel Measure

Recognising organisations or individuals that have developed an innovative technique or service

Bath & North East
Somerset, Bristol,
North Somerset and South
Gloucestershire Councils,
working with the
Department for Transport



Most Innovative Sustainable Travel Measure

Bath Electric Bike Commute Initiative

Offering people the chance to try an electric bike for 6 weeks!



Bath & North East Somerset, Bristol, North Somerset and South Gloucestershire Councils, working with the Department for Transport



Most Innovative Sustainable Travel Measure

Solarsense

To date have installed 14,000 solar powered EV charging points



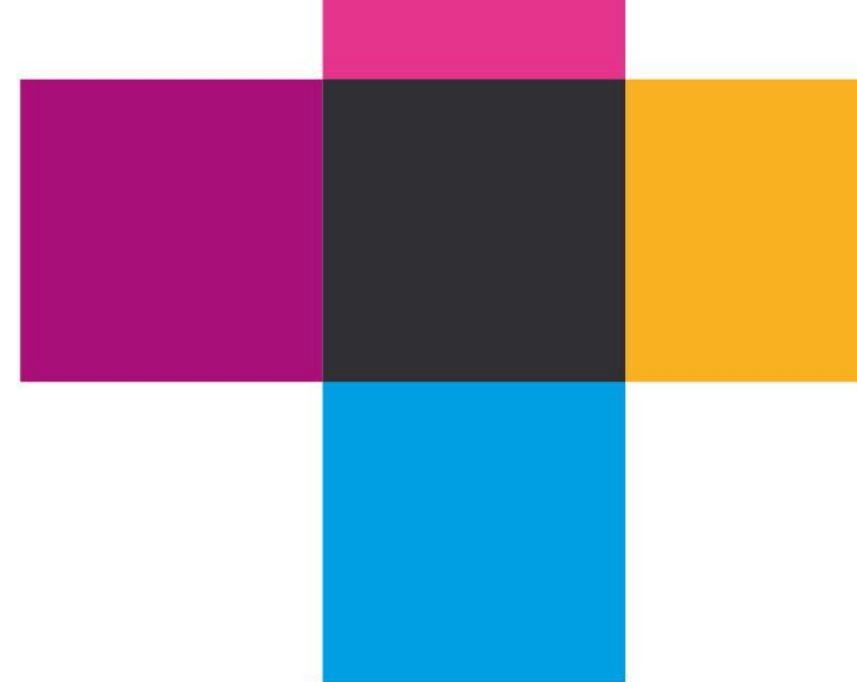
Bath & North East
Somerset, Bristol,
North Somerset and South
Gloucestershire Councils,
working with the
Department for Transport



Most Innovative Sustainable Travel Measure

Amazon

Worked with Stagecoach to provide a staff bus service



Bath & North East
Somerset, Bristol,
North Somerset and South
Gloucestershire Councils,
working with the
Department for Transport



Most Innovative Sustainable Travel Measure

Severn Ride & Stride

Offering a whole programme of sustainable travel support to the Avonmouth Severnside Enterprise Area



Bath & North East
Somerset, Bristol,
North Somerset and South
Gloucestershire Councils,
working with the
Department for Transport



Most Innovative Sustainable Travel Measure

North Bristol NHS Trust

Created a 'Travel Smart Hub'
in order to communicate
sustainable travel to all
staff members



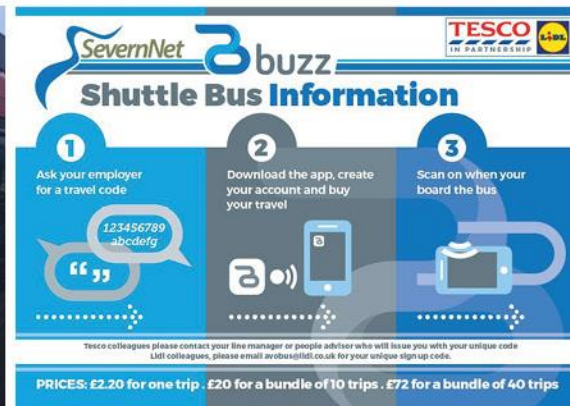
Bath & North East
Somerset, Bristol,
North Somerset and South
Gloucestershire Councils,
working with the
Department for Transport



Most Innovative Sustainable Travel Measure

Tesco, Lidl, SeverNet, Stagecoach & Esoterix Partnership

A passenger demand bus service

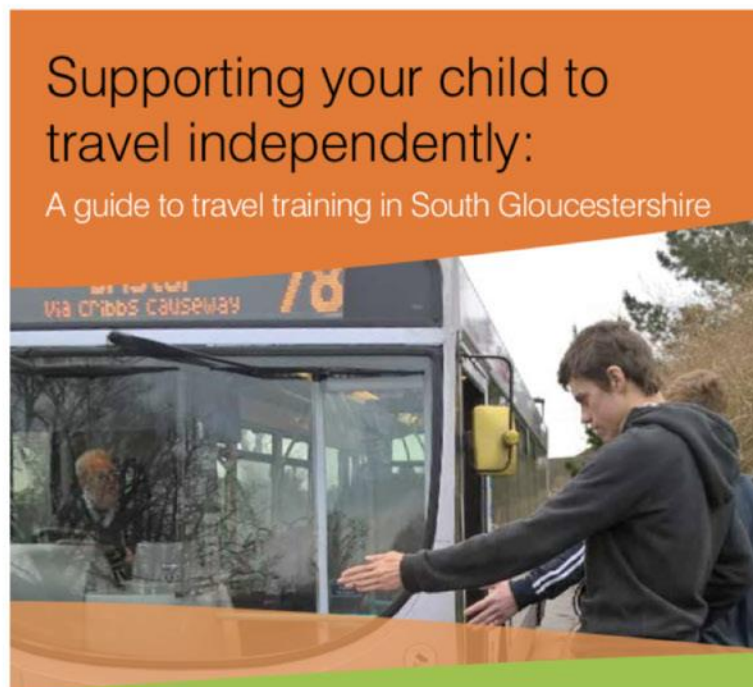


Bath & North East
Somerset, Bristol,
North Somerset and South
Gloucestershire Councils,
working with the
Department for Transport



Most Innovative Sustainable Travel Measure

Job Centre Plus, South Gloucestershire Travel Training



Bath & North East
Somerset, Bristol,
North Somerset and South
Gloucestershire Councils,
working with the
Department for Transport



Highly Commended

Most Innovative Measure 2019



Bath & North East
Somerset, Bristol,
North Somerset and South
Gloucestershire Councils,
working with the
Department for Transport



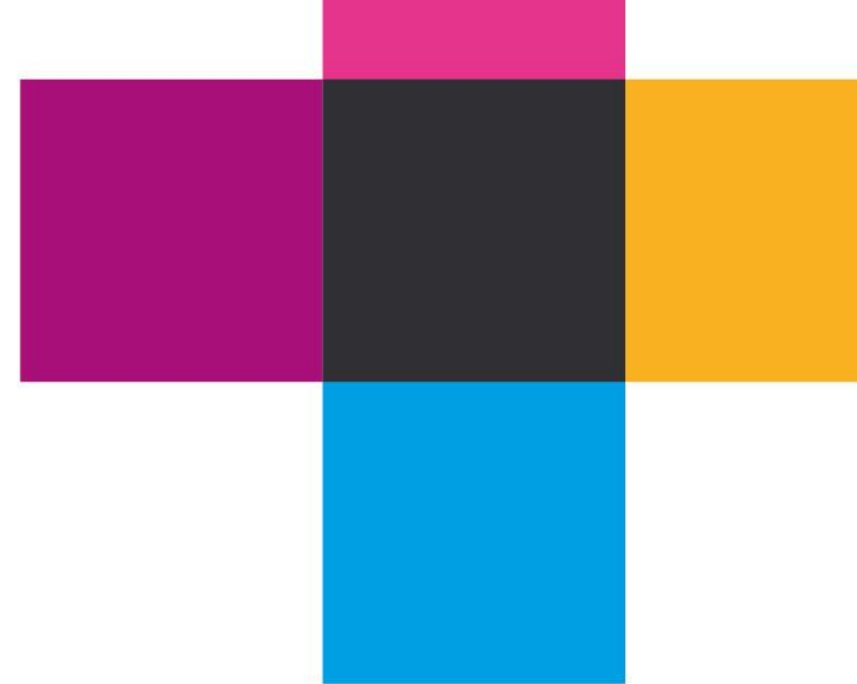
North Bristol NHS Trust & Bath Electric Bike Commute Initiative

Bath & North East
Somerset, Bristol,
North Somerset and South
Gloucestershire Councils,
working with the
Department for Transport



Winner

Most Innovative Measure 2019



Bath & North East
Somerset, Bristol,
North Somerset and South
Gloucestershire Councils,
working with the
Department for Transport



travelwest+



Severn Ride & Stride



Sustainable Travel Champion

Recognizing individuals who have shown an
outstanding commitment to sustainable travel

Bath & North East
Somerset, Bristol,
North Somerset and South
Gloucestershire Councils,
working with the
Department for Transport

travelwest+



Sustainable Travel Champion

Sini Berridge

Weston College Group

Has been paramount to
the execution of the Weston
College Travel Plan



Bath & North East
Somerset, Bristol,
North Somerset and South
Gloucestershire Councils,
working with the
Department for Transport



Sustainable Travel Champion

Emma van Woerkom

Healthy Living Centre Library

A huge advocate of sustainable travel across Weston libraries and beyond!



Bath & North East
Somerset, Bristol,
North Somerset and South
Gloucestershire Councils,
working with the
Department for Transport



Sustainable Travel Champion

Tom Southey

Rolls-Royce

Made significant positive changes to the entire staff induction process at Rolls-Royce



Bath & North East
Somerset, Bristol,
North Somerset and South
Gloucestershire Councils,
working with the
Department for Transport



Sustainable Travel Champion

Sudhanshu Mardikar

DAC Beachcroft

Has been one of our key champions for several years, working tirelessly to get his colleagues walking and cycling to and from work, over lunch and even outside of work!



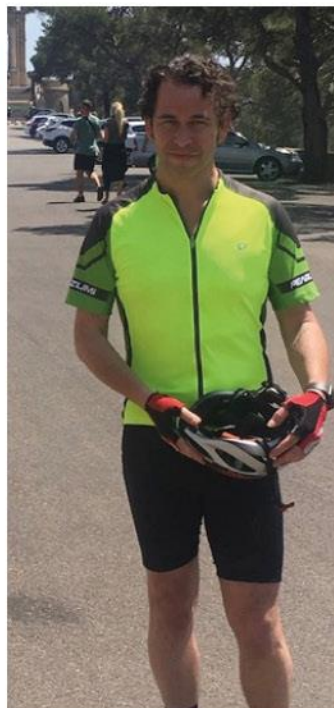
Bath & North East
Somerset, Bristol,
North Somerset and South
Gloucestershire Councils,
working with the
Department for Transport



Sustainable Travel Champion

Garga Chamberlain & Jason Scholtz Computershare

Consistently promoting cycling
and healthy living to all their
staff for over 5 years!



Bath & North East
Somerset, Bristol,
North Somerset and South
Gloucestershire Councils,
working with the
Department for Transport



Sustainable Travel Champion

Hannah Roberts

Amazon

Has introduced and successfully promoted a corporate Lifshare membership



Bath & North East
Somerset, Bristol,
North Somerset and South
Gloucestershire Councils,
working with the
Department for Transport



Highly Commended

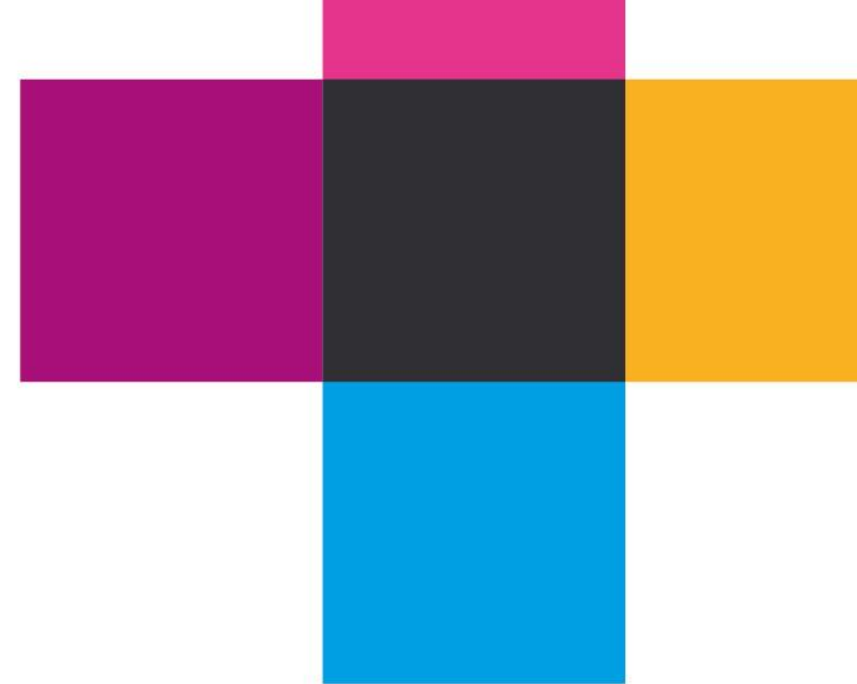
Sustainable Travel Champion 2019

Bath & North East
Somerset, Bristol,
North Somerset and South
Gloucestershire Councils,
working with the
Department for Transport



Tom Southey
Rolls-Royce

Sini Berridge
Weston College Group



Bath & North East
Somerset, Bristol,
North Somerset and South
Gloucestershire Councils,
working with the
Department for Transport



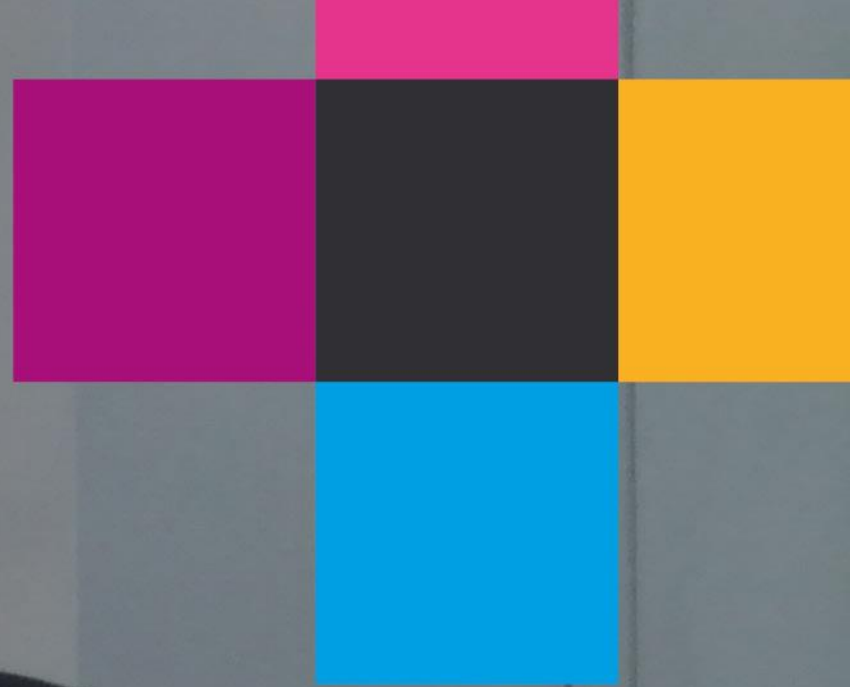
Winner

Sustainable Travel Champion 2019

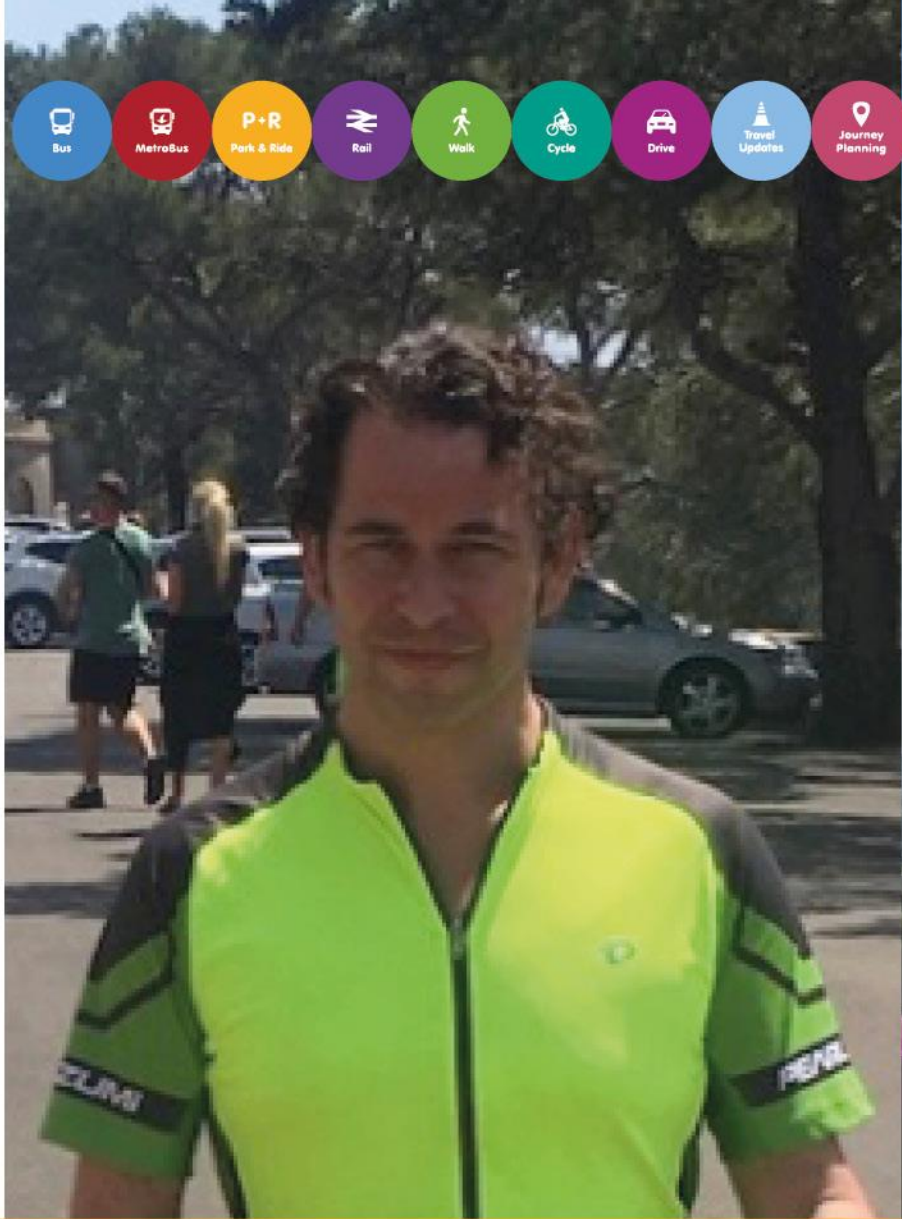
Bath & North East
Somerset, Bristol,
North Somerset and South
Gloucestershire Councils,
working with the
Department for Transport



travelwest+



Sudhanshu Mardikar DAC Beachcroft



travelwest+



Garga Chamberlain & Jason Scholtz Computershare



Organisation of the Year

Recognising outstanding
contributions to sustainable travel

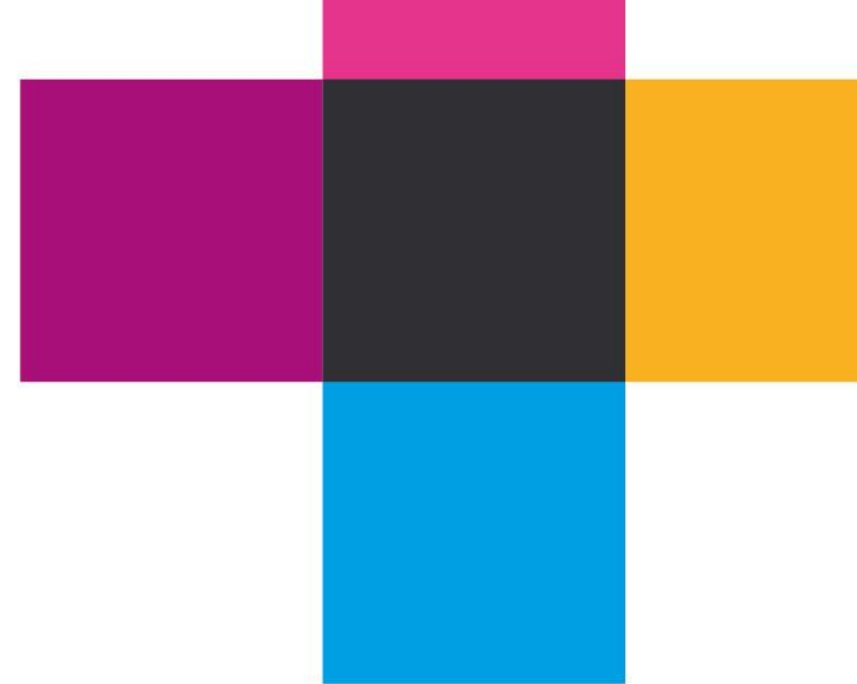
Bath & North East
Somerset, Bristol,
North Somerset and South
Gloucestershire Councils,
working with the
Department for Transport

travelwest+



Winner

Organisation of the Year 2019



Bath & North East
Somerset, Bristol,
North Somerset and South
Gloucestershire Councils,
working with the
Department for Transport



travelwest+



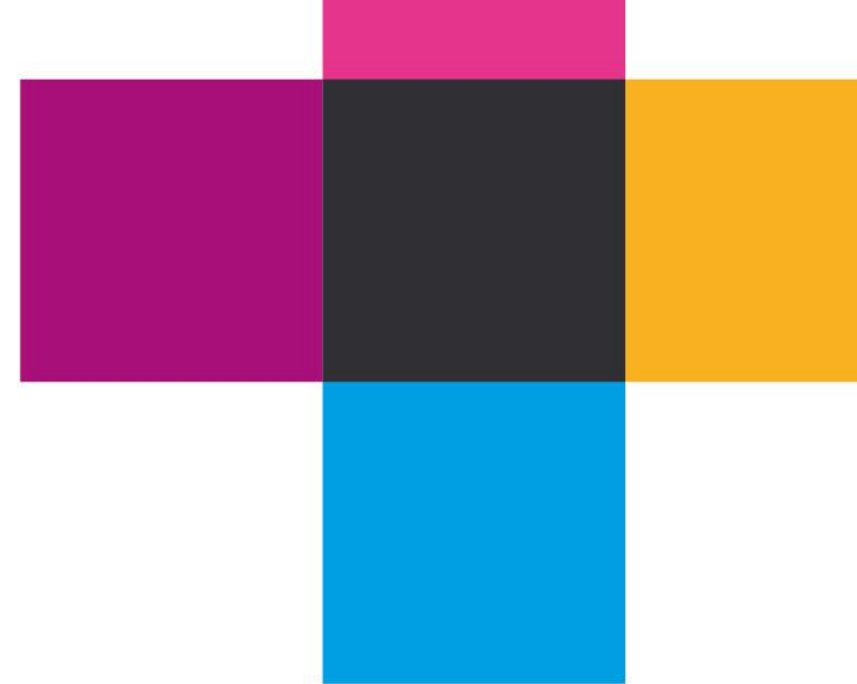
Rolls-Royce



Congratulations to all!



Bath & North East
Somerset, Bristol,
North Somerset and South
Gloucestershire Councils,
working with the
Department for Transport



Closing remarks

from

Lucy Shomali

Director of Development and Environment
North Somerset Council

Bath & North East
Somerset, Bristol,
North Somerset and South
Gloucestershire Councils,
working with the
Department for Transport



Thank you for attending!



Bath & North East
Somerset, Bristol,
North Somerset and South
Gloucestershire Councils,
working with the
Department for Transport