

South Bristol Link Construction

The South Bristol Link was constructed by Alun Griffiths (Construction) Ltd.

Construction started in March 2015.

The South Bristol Link is a significant addition to our local transport network. It includes:

- 4.5 km of new road
- 4.5 km of new walking and cycling paths
- 1 new major rail bridge that allows the South Bristol Link to go under the Great Western railway line
- 2 new road bridges
- 2 new roundabouts
- 3 signalled junctions
- 0.5 km of bus-only road
- Major landscaping
- Restoration and preservation of three historic lime kilns on the A370 roundabout

Caring for the environment

- 1 hectare of new woodland has been planted
- 8 new ponds
- 3.5 hectares of species rich grassland (the equivalent of five Ashton Gate football pitches)
- Mammal underpasses provided at six locations
- 10 bat boxes and 30 bird nesting boxes provided

Sustainable working

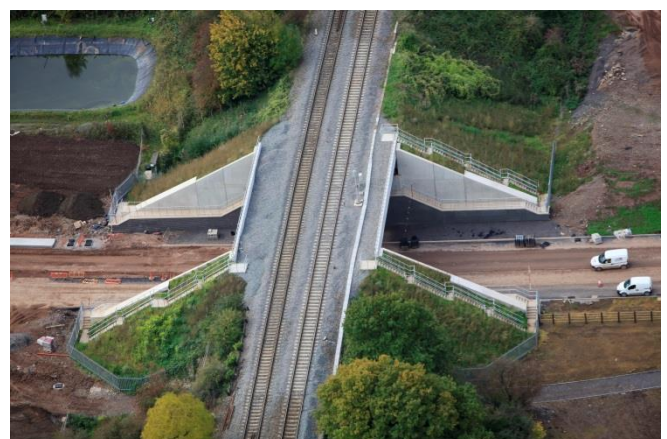
Alun Griffiths (Construction) Ltd were able to use their in-house material recycling capability to process material excavated during the works for Bristol Airport's new terminal extension and reuse it for the South Bristol Link.



Aerial view of the South Bristol Link and the new A370 roundabout and Long Ashton Park and Ride



Works for the new underbridge which allows the South Bristol Link to go under the Great Western Railway



The completed underbridge

Employment and training opportunities for south Bristol people

Making sure local people benefit from the construction of the South Bristol Link was an important priority for MetroBus and Alun Griffiths (Contractors) Ltd.

Alun Griffiths (Contractors) Ltd have established a long term regional office in South Bristol and have for this project employed:

- 12 local staff members
- 30 local people employed as operatives
- 3 apprentice engineers
- 2 University of the West of England student placements
- 5 student summer placements
- 49 local suppliers and sub-contractors

MetroBus Project Manager Alex Fear said, "These numbers demonstrate how the project and contractor have worked together to make a difference within the south Bristol area."

Alun Griffiths (Construction) Ltd Area Manager Simon Dunn said, "It has been a pleasant experience being welcomed into the local community. Being able to employ local operatives and use local suppliers to such an extent has really added to the feel of a community project."

Abigail Sims, a student at the University of the West of England who is on Alun Griffiths' trainee scheme, was awarded Trainee Quantity Surveyor of Year for South West England by the Civil Engineering Contractors Association.

Another trainee engineer was also awarded a prize for best Geotechnical Student.

Alun Griffiths (Construction) Ltd have also worked with Weston College to develop a Groundworks Apprenticeship and six new apprentices have just started with the company.



Abigail Sims receiving her award from the Civil Engineering Contractors Association



Students on placement on the South Bristol Link scheme

Community Engagement

Alun Griffiths (Construction) Ltd have worked with the local community on a number of small yet important improvements and initiatives. They have:

Attended the local Make Sunday Special community event

Provided a new sign for the HBH Cutler Road Community Centre

Donated top soil to St Oswalds Church, Dundry View Neighbourhood Partnership and the Hartcliffe Health and Environment Action Group

Advised Headley Park School on a proposed cycle path

Donated fencing to the Dundry and Hartcliffe Wildlife Conservation Group

Improved Kings Head Lane Park by providing groundwork and top soil

Sponsored the Bristol Bison Wheelchair Basketball Club

Taken the Institute of Civil Engineers bridge to four schools

Visited three local schools to teach children about the importance of construction site safety

Supported Macmillan Coffee Mornings at the Gatehouse Community Centre

Provided two new benches at Headley Lane Park

Attended 14 monthly meetings with local Neighbourhood Forum and held four drop-ins for local residents

Produced a regular community newsletter

Organised a Santa bike ride of the South Bristol Link where 921 people took part

Organised an Exchanging Places to enable people to experience the perspective of a driver of a large lorry



921 people took part in the Santa Bike Ride organised by Alun Griffiths

Further community work

Although the South Bristol Link is nearly finished, Alun Griffiths (Construction) Ltd have a few remaining and ongoing community projects. They will be reinstating the footpath between Highridge Green and Highridge Park and providing a barrier to deter motorcyclists using it as short cut. They are also providing two new benches for Highridge Common, a new bench at the HBH Community Centre on Cutler Road, two new benches for Crox's Bottom and repairing the large sign at the HBH Community Centre on Cutler Road.

South Bristol Link: Construction (January 2017)

Produced by West of England Councils: MetroBus and MetroWest